

\$1,108,800 - 10309 100 Avenue, Clairmont

MLS® #GP213424

\$1,108,800

0 Bedroom, 0.00 Bathroom,
Land on 4.62 Acres

N/A, Clairmont, Alberta

4.62 ACRE industrial Lot Located on the south side of 100 Ave in Clairmont. Great access and exposure to HWY2 North. Zoned RM-4 - HIGHWAY INDUSTRIAL.

Essential Information

| | |
|-----------|-------------|
| MLS® # | GP213424 |
| Price | \$1,108,800 |
| Bathrooms | 0.00 |
| Acres | 4.62 |
| Type | Land |
| Sub-Type | Land |
| Status | Active |

Community Information

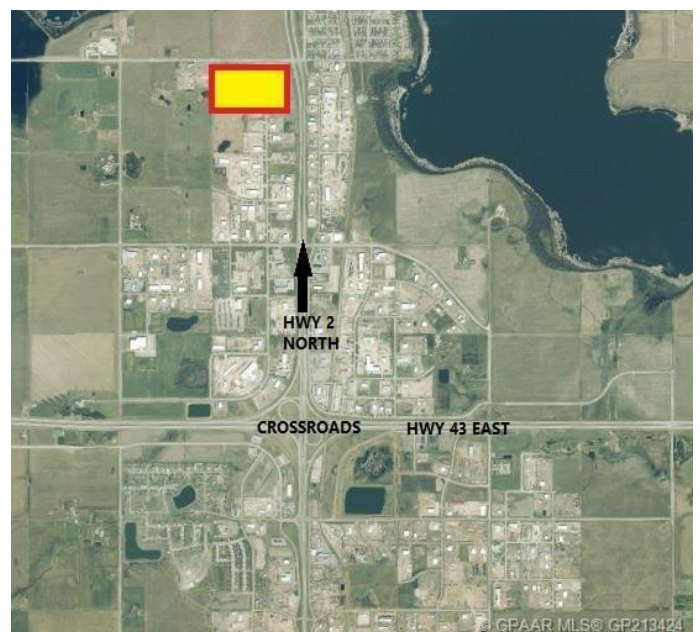
| | |
|-------------|---------------------------------|
| Address | 10309 100 Avenue |
| Subdivision | N/A |
| City | Clairmont |
| County | Grande Prairie No. 1, County of |
| Province | Alberta |
| Postal Code | T0H 0W0 |

Additional Information

| | |
|----------------|---------------------|
| Date Listed | December 18th, 2019 |
| Days on Market | 2053 |
| Zoning | RM-4 |

Listing Details

| | |
|----------------|-------------------------|
| Listing Office | Tom Shields Realty Inc. |
|----------------|-------------------------|



Data is supplied by Pillar 9â„¢ MLS® System. Pillar 9â„¢ is the owner of the copyright in its MLS® System. Data is deemed reliable but is not guaranteed accurate by Pillar 9â„¢. The trademarks MLS®, Multiple Listing Service® and the associated logos are owned by The Canadian Real Estate Association (CREA) and identify the quality of services provided by real estate professionals who are members of CREA. Used under license.