

\$475,000 - Aspen Drive, Edson

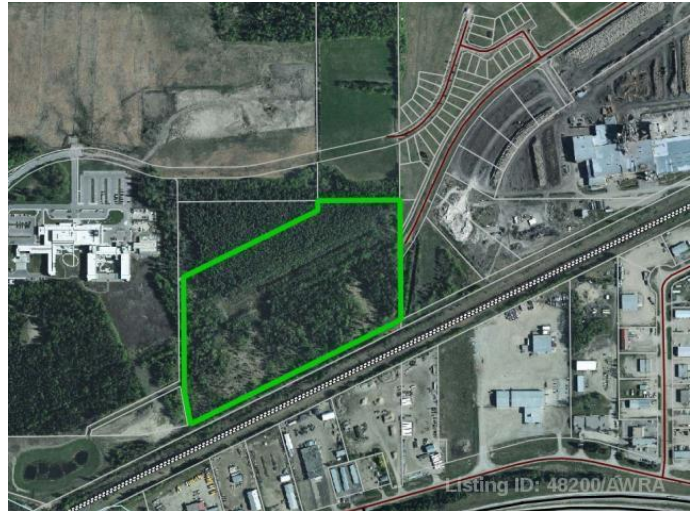
MLS® #AW48200

\$475,000

0 Bedroom, 0.00 Bathroom,
Land on 30.05 Acres

N/A, Edson, Alberta

Fantastic opportunity to own approximately 30 acres in town limits. Strategically located in the east end of Edson between the new Edson hospital and the Weyerhaeuser mill. The property is currently zoned Urban Reserve but with rezoning and Town approval the development possibilities are endless!



Essential Information

MLS® #	AW48200
Price	\$475,000
Bathrooms	0.00
Acres	30.05
Type	Land
Sub-Type	Land
Status	Active

Community Information

Address	Aspen Drive
Subdivision	N/A
City	Edson
County	Yellowhead County
Province	Alberta

Additional Information

Date Listed	November 12th, 2018
Days on Market	2453
Zoning	UR

Listing Details

Listing Office

ROYAL LEPAGE EDSON REAL ESTATE

Data is supplied by Pillar 9â„¢ MLSÂ® System. Pillar 9â„¢ is the owner of the copyright in its MLSÂ® System. Data is deemed reliable but is not guaranteed accurate by Pillar 9â„¢. The trademarks MLSÂ®, Multiple Listing ServiceÂ® and the associated logos are owned by The Canadian Real Estate Association (CREA) and identify the quality of services provided by real estate professionals who are members of CREA. Used under license.