

\$28 - 7, 2020 Strachan Road Se, Medicine Hat

MLS® #A2258031

\$28

0 Bedroom, 0.00 Bathroom,
Commercial on 0.00 Acres

SE Southridge, Medicine Hat, Alberta

This Prime Commercial Bay comprising approximately 1,500 sq.ft. is available for lease! Located in a high traffic plaza with terrific exposure that is conveniently located across from Walmart in the busy south end of Medicine Hat. The space is being demised from the neighboring unit with possession negotiable and a preferred minimum five year lease term. Offered at \$28NNN plus \$12.00 estimated occupancy costs for a total of \$5,000.00 per month, plus GST and separately metered utilities. Great location for a nice coffee shop, cafe, wellness provider, office professionals, or retailer etc.

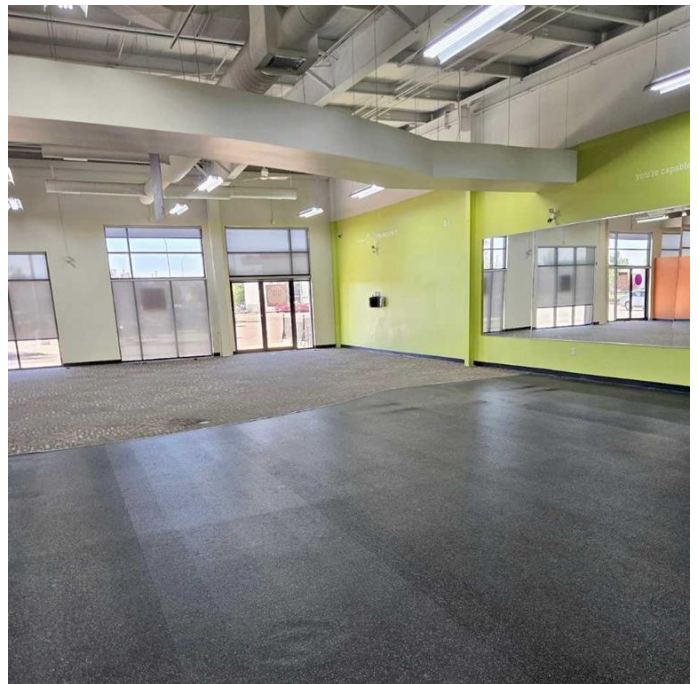
Built in 2011

Essential Information

MLS® #	A2258031
Price	\$28
Bathrooms	0.00
Acres	0.00
Year Built	2011
Type	Commercial
Sub-Type	Mixed Use
Status	Active

Community Information

Address	7, 2020 Strachan Road Se
Subdivision	SE Southridge
City	Medicine Hat



County	Medicine Hat
Province	Alberta
Postal Code	T1B 0G4

Additional Information

Date Listed	September 17th, 2025
Zoning	C-R

Listing Details

Listing Office	TMV PROPERTY GROUP LTD.
----------------	-------------------------

Data is supplied by Pillar 9â„¢ MLSÂ® System. Pillar 9â„¢ is the owner of the copyright in its MLSÂ® System. Data is deemed reliable but is not guaranteed accurate by Pillar 9â„¢. The trademarks MLSÂ®, Multiple Listing ServiceÂ® and the associated logos are owned by The Canadian Real Estate Association (CREA) and identify the quality of services provided by real estate professionals who are members of CREA. Used under license.