

\$434,900 - 30 Maple Bay, Lacombe

MLS® #A2257121

\$434,900

5 Bedroom, 3.00 Bathroom, 1,285 sqft

Residential on 0.25 Acres

Woodlands, Lacombe, Alberta

This unique home is full of character and charm, perfectly set on a large pie-shaped lot that offers both privacy and space for the whole family. From the moment you arrive, youâ€™ll notice the mature yard, inviting deck, and peaceful setting that make this property truly stand out.

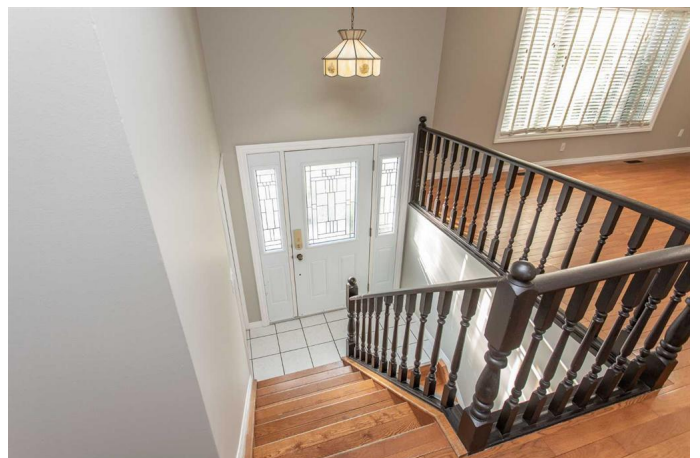
Inside, the heart of the home is a beautifully laid-out kitchen that flows effortlessly into the living areas, making it perfect for everyday living and entertaining. Fresh paint and many thoughtful updates give the home a bright, move-in-ready feel, while the rich hardwood adds warmth and timeless appeal.

Families will love the room to grow with a fully developed walk-out basement, providing extra living space and flexibility for all your needs. The attached garage offers convenience, while the private yard is ideal for gatherings, kids, or pets.

With its walkable location close to schools and parks, this property combines comfort, character, and lifestyle.

Checking all the boxes: Walk-out basement, attached garage, mature, private yard with deck, many updates + fresh paint, well-designed kitchen, large pie-shaped lot in a cul-de-sac.

This is more than just a houseâ€”itâ€™s a



place youâ€™ll be proud to call home. Come see for yourself why this is a must-view property!

Built in 1981

Essential Information

MLS® #	A2257121
Price	\$434,900
Bedrooms	5
Bathrooms	3.00
Full Baths	2
Half Baths	1
Square Footage	1,285
Acres	0.25
Year Built	1981
Type	Residential
Sub-Type	Detached
Style	Bi-Level
Status	Active

Community Information

Address	30 Maple Bay
Subdivision	Woodlands
City	Lacombe
County	Lacombe
Province	Alberta
Postal Code	T4L 1V5

Amenities

Parking Spaces	2
Parking	Double Garage Attached
# of Garages	2

Interior

Interior Features	Kitchen Island
Appliances	Dishwasher, Dryer, Garage Control(s), Microwave, Oven, Refrigerator, Washer
Heating	Forced Air, Natural Gas

Cooling	None
Has Basement	Yes
Basement	Finished, Full

Exterior

Exterior Features	Private Yard
Lot Description	Backs on to Park/Green Space
Roof	Asphalt Shingle
Construction	Wood Frame
Foundation	Poured Concrete

Additional Information

Date Listed	September 15th, 2025
Days on Market	1
Zoning	R1

Listing Details

Listing Office	RE/MAX real estate central alberta
----------------	------------------------------------

Data is supplied by Pillar 9â„¢ MLS® System. Pillar 9â„¢ is the owner of the copyright in its MLS® System. Data is deemed reliable but is not guaranteed accurate by Pillar 9â„¢. The trademarks MLS®, Multiple Listing Service® and the associated logos are owned by The Canadian Real Estate Association (CREA) and identify the quality of services provided by real estate professionals who are members of CREA. Used under license.