

# \$144,500 - 205, 25 Robinson Avenue, Penhold

MLS® #A2256991

## \$144,500

2 Bedroom, 1.00 Bathroom, 912 sqft

Residential on 0.02 Acres

Park Place, Penhold, Alberta

Bright and spacious 2-bed, 1-bath condo in Penhold! One of the largest units in the building, featuring in-suite laundry, a functional kitchen, and plenty of natural light. Comes with an assigned powered parking stall for year-round convenience. Condo fees include heat, water, garbage, and recycling. Pets under 20 lbs allowed with board approval. Affordable and rarely available!

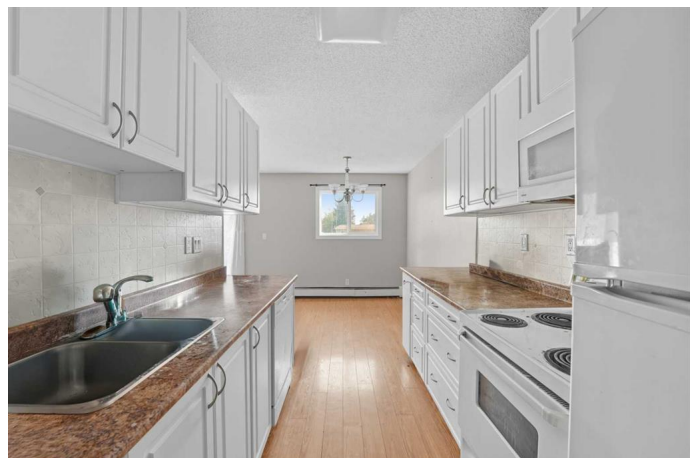
Built in 1979

### Essential Information

MLS® #	A2256991
Price	\$144,500
Bedrooms	2
Bathrooms	1.00
Full Baths	1
Square Footage	912
Acres	0.02
Year Built	1979
Type	Residential
Sub-Type	Apartment
Style	Single Level Unit
Status	Active

### Community Information

Address	205, 25 Robinson Avenue
Subdivision	Park Place
City	Penhold



County	Red Deer County
Province	Alberta
Postal Code	T0M 1R0

### **Amenities**

Amenities	Parking
Parking Spaces	1
Parking	Stall

### **Interior**

Interior Features	Open Floorplan
Appliances	Built-In Refrigerator, Dishwasher, Electric Stove, Washer/Dryer
Heating	Baseboard, Natural Gas
Cooling	None
# of Stories	3

### **Exterior**

Exterior Features	Balcony
Construction	Wood Siding

### **Additional Information**

Date Listed	September 14th, 2025
Days on Market	1
Zoning	R3

### **Listing Details**

Listing Office	Royal LePage Network Realty Corp.
----------------	-----------------------------------

Data is supplied by Pillar 9â„¢ MLS® System. Pillar 9â„¢ is the owner of the copyright in its MLS® System. Data is deemed reliable but is not guaranteed accurate by Pillar 9â„¢. The trademarks MLS®, Multiple Listing Service® and the associated logos are owned by The Canadian Real Estate Association (CREA) and identify the quality of services provided by real estate professionals who are members of CREA. Used under license.