

\$630,000 - 332 Ranch Close, Strathmore

MLS® #A2255752

\$630,000

3 Bedroom, 3.00 Bathroom, 2,045 sqft
Residential on 0.15 Acres

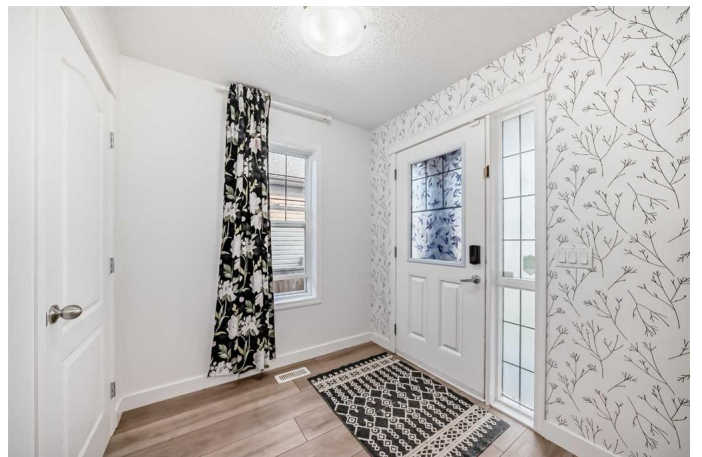
The Ranch_Strathmore, Strathmore, Alberta

Gorgeous custom built 2 Storey HOME BACKING ONTO GREEN BELT. Oversized GARAGE 23.5'x31.5'. Deck is 27.9x15.9. Massive Lot. Located in one of Strathmore's most sought after neighbourhoods! Home features a well thought out floor plan including a chef's dream kitchen with lots of cabinetry ., granite counters, quality stainless steel appliances, a walk in pantry and access to the deck. Spacious primary suite with an oversized walk in closet and luxurious ensuite. Lots of storage. Fully fenced backyard. This home is a great find -

Built in 2009

Essential Information

MLS® #	A2255752
Price	\$630,000
Bedrooms	3
Bathrooms	3.00
Full Baths	2
Half Baths	1
Square Footage	2,045
Acres	0.15
Year Built	2009
Type	Residential
Sub-Type	Detached
Style	2 Storey
Status	Active



Community Information

Address	332 Ranch Close
Subdivision	The Ranch_Strathmore
City	Strathmore
County	Wheatland County
Province	Alberta
Postal Code	T1P 0B4

Amenities

Parking Spaces	2
Parking	Double Garage Attached, Common
# of Garages	2

Interior

Interior Features	Granite Counters, High Ceilings, Kitchen Island, Open Floorplan, Pantry
Appliances	Dishwasher, Gas Stove, Refrigerator, Washer/Dryer, Window Coverings
Heating	Forced Air, Natural Gas
Cooling	Central Air
Fireplace	Yes
# of Fireplaces	1
Fireplaces	Decorative, Gas, Living Room
Has Basement	Yes
Basement	Full

Exterior

Exterior Features	Private Entrance
Lot Description	Back Yard, Front Yard, Greenbelt
Roof	Asphalt Shingle
Construction	Wood Frame
Foundation	Poured Concrete

Additional Information

Date Listed	September 9th, 2025
Days on Market	71
Zoning	R1

Listing Details

Listing Office	RE/MAX Landan Real Estate
----------------	---------------------------

Data is supplied by Pillar 9â„¢ MLSÂ® System. Pillar 9â„¢ is the owner of the copyright in its MLSÂ® System. Data is

deemed reliable but is not guaranteed accurate by Pillar 9â,,ç. The trademarks MLSÂ®, Multiple Listing ServiceÂ® and the associated logos are owned by The Canadian Real Estate Association (CREA) and identify the quality of services provided by real estate professionals who are members of CREA. Used under license.