

# \$10 - 3601 2 Avenue N, Lethbridge

MLS® #A2250117

**\$10**

0 Bedroom, 0.00 Bathroom,  
Commercial on 0.00 Acres

NONE, Lethbridge, Alberta

If you are looking for a larger office space that offers great visibility, great off street parking, at an affordable rate, look no further. This is a must see. There is a possibility of demising into smaller a smaller space for the right tenant.

## Essential Information

MLS® #	A2250117
Price	\$10
Bathrooms	0.00
Acres	0.00
Type	Commercial
Sub-Type	Office
Status	Active

## Community Information

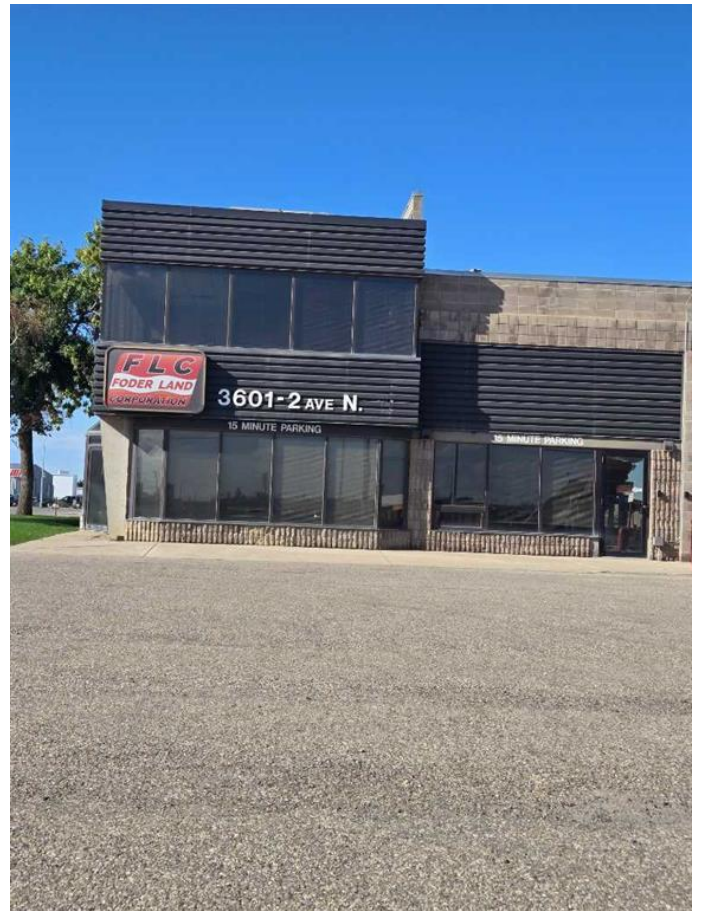
Address	3601 2 Avenue N
Subdivision	NONE
City	Lethbridge
County	Lethbridge
Province	Alberta
Postal Code	T1H 5K7

## Interior

Heating	Central, Natural Gas
---------	----------------------

## Exterior

Roof	Tar/Gravel
------	------------



Construction Concrete, Other  
Foundation None

Additional Information

Date Listed August 18th, 2025

Listing Details

Listing Office Royal Lepage South Country - L



Data is supplied by Pillar 9â„¢ MLSÂ® System. Pillar 9â„¢ is the owner of the copyright in its MLSÂ® System. Data is deemed reliable but is not guaranteed accurate by Pillar 9â„¢. The trademarks MLSÂ®, Multiple Listing ServiceÂ® and the associated logos are owned by The Canadian Real Estate Association (CREA) and identify the quality of services provided by real estate professionals who are members of CREA. Used under license.

