

\$4,300 - 2145, 88 Shawnee Street Sw, Calgary

MLS® #A2249039

\$4,300

0 Bedroom, 0.00 Bathroom,
Commercial on 0.00 Acres

Shawnee Slopes, Calgary, Alberta

In the heart of Shawnee Slopes, this modern plaza offers excellent visibility, strong demographics, and easy access. Just off Macleod Trail and minutes from Fish Creekâ€™Lacombe CTrain station, itâ€™s surrounded by multi-family communities, a busy seniors residence, and steady vehicle and foot traffic.

Ideal for:

Shawarma Shop

Acupuncture Clinic

Pet Grooming

Optometry

Cake Shop / Bakery

Floral Shop

Take-Out Restaurant

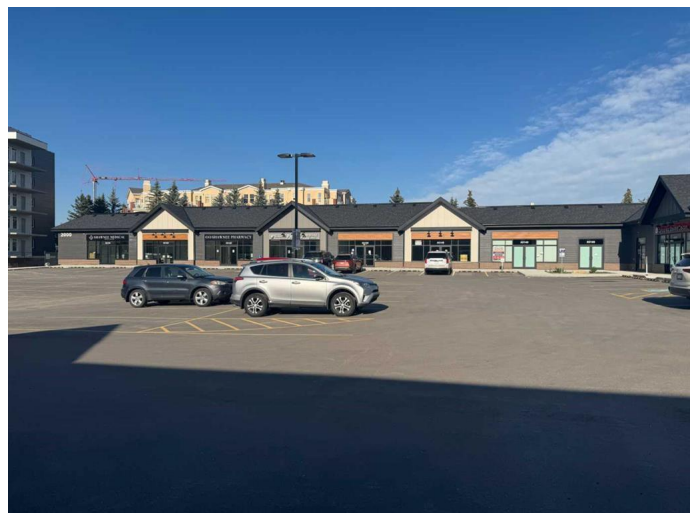
Franchise Store (e.g. Subway)

Dry Cleaning & Alterations

Respiratory Care (next to seniors facility)

Pub or Bar

Music / Dance Studio



Kumon / Learning Centre

Professional Office

? Ample on-site parking for staff and customers

? Strong household incomes and steady residential growth

? Ideal location to launch or expand your business

Built in 2023

Essential Information

MLS® #	A2249039
Price	\$4,300
Bathrooms	0.00
Acres	0.00
Year Built	2023
Type	Commercial
Sub-Type	Retail
Status	Active

Community Information

Address	2145, 88 Shawnee Street Sw
Subdivision	Shawnee Slopes
City	Calgary
County	Calgary
Province	Alberta
Postal Code	T2Y0Z7

Additional Information

Date Listed	August 15th, 2025
Days on Market	66
Zoning	DC

Listing Details

Listing Office	Coldwell Banker YAD Realty
----------------	----------------------------

Data is supplied by Pillar 9â„¢ MLS® System. Pillar 9â„¢ is the owner of the copyright in its MLS® System. Data is

deemed reliable but is not guaranteed accurate by Pillar 9â,,ç. The trademarks MLSÂ®, Multiple Listing ServiceÂ® and the associated logos are owned by The Canadian Real Estate Association (CREA) and identify the quality of services provided by real estate professionals who are members of CREA. Used under license.