

\$520,000 - 465 Regal Park Ne, Calgary

MLS® #A2245608

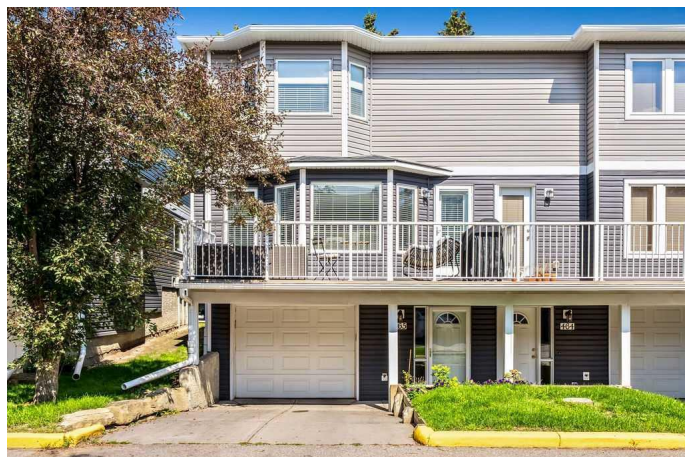
\$520,000

3 Bedroom, 3.00 Bathroom, 1,436 sqft

Residential on 0.00 Acres

Renfrew, Calgary, Alberta

****OPEN HOUSE -- SUNDAY, AUGUST 10, 2-4 PM**** This elegant 1,436 sq ft end-unit townhome offers an exceptional blend of style, comfort, and location—backing onto a peaceful linear park and nestled in one of Calgary’s most convenient inner-city communities. Professionally renovated and impeccably maintained, the home features new luxury vinyl plank flooring and plush carpet throughout, creating a warm and cohesive feel from top to bottom. The designer kitchen is a true showpiece with quartz countertops, upgraded stainless steel appliances, and a generous island that’s perfect for both entertaining and everyday living. A spacious dining area easily accommodates a large table, while the expansive living room with gas fireplace provides the perfect backdrop for cozy evenings at home. Thoughtful touches like the stylish powder room and built-in laundry add both function and flair. Upstairs, the generously sized primary suite offers a private retreat with a chic 3-piece ensuite, while two additional bedrooms and a beautifully appointed 4-piece main bath complete the upper level with versatility and ease. The lower-level entry offers direct access to a tandem garage with abundant storage possibilities—ideal for bikes, gear, or seasonal décor—and central air conditioning ensures year-round comfort. Whether you're looking for your first home, seeking a low-maintenance lifestyle, or adding



a turnkey investment to your portfolio, this home offers the perfect blend of form and function in a coveted location. Situated in a well-managed, pet-friendly complex, with easy access to downtown, Bridgeland, and 16th Avenue—this is elevated townhouse living in a community that truly has it all.

Built in 2000

Essential Information

MLS® #	A2245608
Price	\$520,000
Bedrooms	3
Bathrooms	3.00
Full Baths	2
Half Baths	1
Square Footage	1,436
Acres	0.00
Year Built	2000
Type	Residential
Sub-Type	Row/Townhouse
Style	2 Storey
Status	Active

Community Information

Address	465 Regal Park Ne
Subdivision	Renfrew
City	Calgary
County	Calgary
Province	Alberta
Postal Code	T2E 0S6

Amenities

Amenities	Visitor Parking
Parking Spaces	2
Parking	Double Garage Attached, Insulated, Tandem
# of Garages	2

Interior

Interior Features	Closet Organizers, Kitchen Island, No Smoking Home, Quartz Counters, Storage
Appliances	Central Air Conditioner, Dishwasher, Dryer, Electric Range, Garage Control(s), Microwave Hood Fan, Refrigerator, Washer, Window Coverings
Heating	Forced Air
Cooling	Central Air
Fireplace	Yes
# of Fireplaces	1
Fireplaces	Family Room, Gas
Has Basement	Yes
Basement	Partial, Walk-Up To Grade

Exterior

Exterior Features	Balcony
Lot Description	Backs on to Park/Green Space, Many Trees, Street Lighting
Roof	Asphalt Shingle
Construction	Vinyl Siding, Wood Frame
Foundation	Poured Concrete

Additional Information

Date Listed	August 6th, 2025
Days on Market	1
Zoning	M-C1

Listing Details

Listing Office	CIR Realty
----------------	------------

Data is supplied by Pillar 9â„¢ MLS® System. Pillar 9â„¢ is the owner of the copyright in its MLS® System. Data is deemed reliable but is not guaranteed accurate by Pillar 9â„¢. The trademarks MLS®, Multiple Listing Service® and the associated logos are owned by The Canadian Real Estate Association (CREA) and identify the quality of services provided by real estate professionals who are members of CREA. Used under license.