

# \$599,900 - 656 Florence Ho Leong Crescent N, Lethbridge

---

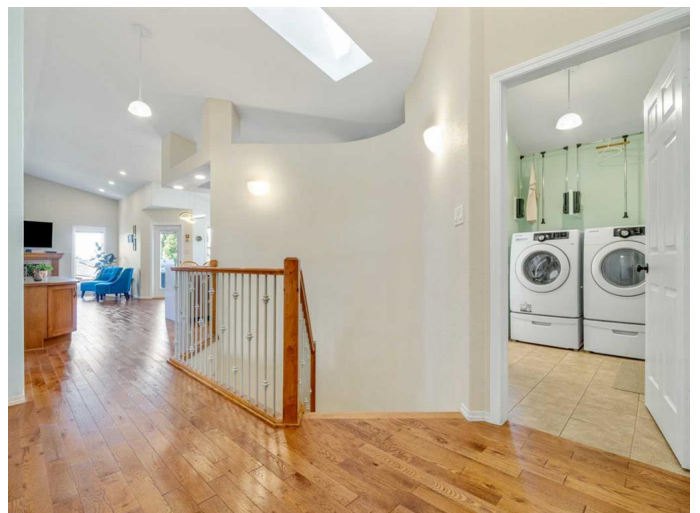
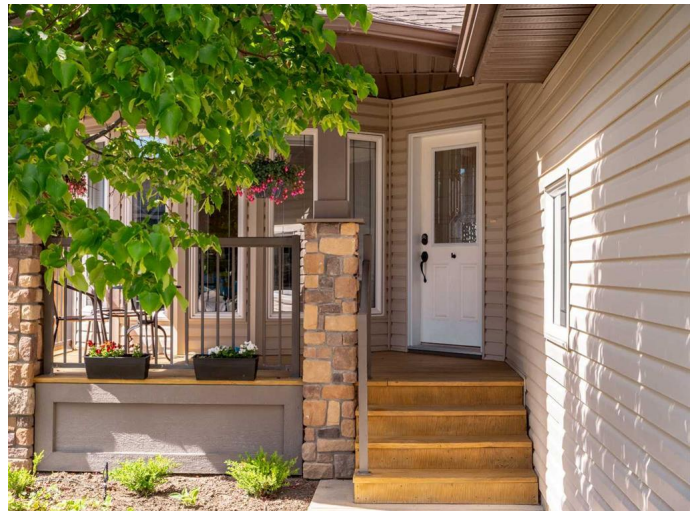
MLS® #A2245409

**\$599,900**

3 Bedroom, 3.00 Bathroom, 1,279 sqft  
Residential on 0.16 Acres

Legacy Ridge / Hardieville, Lethbridge, Alberta

Meticulously Maintained Walk-Out Bungalow with Detached Shop in Quiet Cul-de-Sac! Welcome to this beautifully maintained walk-out bungalow, offering the perfect blend of functionality, comfort, and style. Located just around the corner from St. Teresa of Calcutta Elementary School, this home is tucked away in a peaceful cul-de-sac and loaded with thoughtful upgrades. Step onto the charming, covered front veranda and into a bright, airy interior filled with natural light, soaring ceilings, and an inviting open-concept layout. Recent updates over the past two years include new interior paint, modern vinyl plank flooring, updated lighting, a renovated ensuite, a newer A/C unit, and more. Enjoy the convenience of main floor laundry, complete with a pull-down drying rack, making single-level living a breeze. The spacious dining area opens to an elevated back deck, perfect for relaxing while overlooking your expansive 91-ft wide backyard—featuring mature blueberry, saskatoon, and raspberry bushes and backing onto a paved lane and school greenspace for added privacy and space. Downstairs, the fully finished walk-out basement offers two large bedrooms, a spacious family room, a full bath, and direct access to a lower patio—ideal for accommodating guests or extended family. The standout feature? A second detached garage/shop, complete with RV parking beside



it. This L-shaped building includes a 24' x 16.5' garage area and an 11' x 12.5' workshop with 10'8" ceiling height, perfect for tackling projects, hobbies, or additional storage. This rare property checks all the boxes—updated, well cared for, and move-in ready. Don't miss the opportunity to own this exceptional home. Schedule your private showing with your preferred REALTOR® today!

Built in 2008

### Essential Information

MLS® #	A2245409
Price	\$599,900
Bedrooms	3
Bathrooms	3.00
Full Baths	2
Half Baths	1
Square Footage	1,279
Acres	0.16
Year Built	2008
Type	Residential
Sub-Type	Detached
Style	Bungalow
Status	Active

### Community Information

Address	656 Florence Ho Leong Crescent N
Subdivision	Legacy Ridge / Hardieville
City	Lethbridge
County	Lethbridge
Province	Alberta
Postal Code	T1H 5M6

### Amenities

Parking Spaces	5
Parking	Alley Access, Double Garage Attached, See Remarks, Single Garage Detached, RV Access/Parking, RV Gated, Workshop in Garage

# of Garages 3

## Interior

Interior Features Built-in Features, High Ceilings, Kitchen Island, No Smoking Home, Open Floorplan, Pantry, Quartz Counters, Vaulted Ceiling(s)

Appliances Central Air Conditioner, Dishwasher, Gas Stove, Microwave Hood Fan, Oven-Built-In, Refrigerator, See Remarks, Washer/Dryer, Window Coverings

Heating Forced Air, Natural Gas

Cooling Central Air

Fireplace Yes

# of Fireplaces 1

Fireplaces Gas, Living Room

Has Basement Yes

Basement Finished, Full, Walk-Out

## Exterior

Exterior Features BBQ gas line, Other, Private Yard

Lot Description Cul-De-Sac, Irregular Lot, Landscaped, Underground Sprinklers

Roof Asphalt Shingle

Construction Concrete, Vinyl Siding, Wood Frame

Foundation Poured Concrete, See Remarks

## Additional Information

Date Listed August 2nd, 2025

Days on Market 2

Zoning R-SL

## Listing Details

Listing Office Braemore Management

Data is supplied by Pillar 9â„¢ MLSÂ® System. Pillar 9â„¢ is the owner of the copyright in its MLSÂ® System. Data is deemed reliable but is not guaranteed accurate by Pillar 9â„¢. The trademarks MLSÂ®, Multiple Listing ServiceÂ® and the associated logos are owned by The Canadian Real Estate Association (CREA) and identify the quality of services provided by real estate professionals who are members of CREA. Used under license.