

\$429,900 - 415 Rubie Street, Nobleford

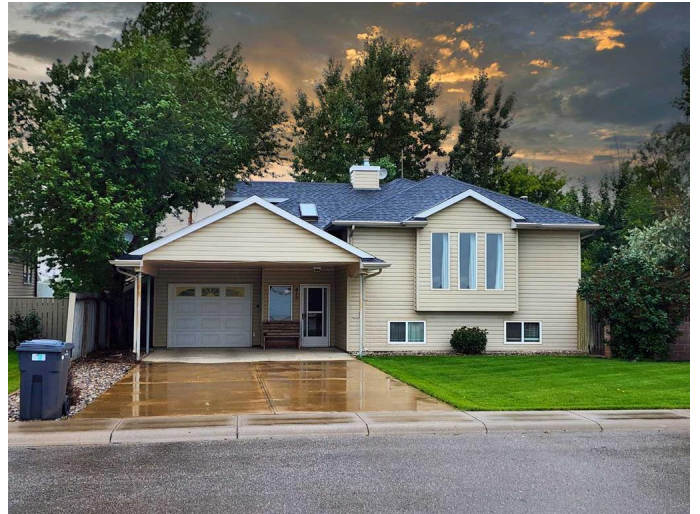
MLS® #A2242325

\$429,900

4 Bedroom, 3.00 Bathroom, 1,276 sqft
Residential on 0.20 Acres

NONE, Nobleford, Alberta

Located just 20 minutes from the city of Lethbridge, this charming home offers the perfect blend of rural peace and urban convenience. Nestled in a quiet town with easy access to schools, shopping, a picturesque lake, and golfing just moments away, this property is ideal for those seeking a relaxed lifestyle without sacrificing amenities. Enjoy low property taxes and an expansive layout that includes a spacious kitchen, a generously sized living room, and comfortable bedrooms throughout. The large, separate front entry welcomes guests with warmth, while the fully developed basement provides ample space for entertaining, hobbies, or a growing family. Outside, the huge yard offers endless possibilities from gardening to playtime with plenty of storage to keep everything neat and tidy. Recent updates bring modern comfort with A/C, new shingles, hot water tank, stylish vinyl plank and carpet flooring, lighting fixtures, fresh paint, and much more. The attached heated garage completes the package, making this home a standout opportunity for anyone looking to settle down in a vibrant and well-connected community.



Built in 2000

Essential Information

MLS® # A2242325

Price \$429,900

Bedrooms	4
Bathrooms	3.00
Full Baths	2
Half Baths	1
Square Footage	1,276
Acres	0.20
Year Built	2000
Type	Residential
Sub-Type	Detached
Style	3 Level Split
Status	Active

Community Information

Address	415 Rubie Street
Subdivision	NONE
City	Nobleford
County	Lethbridge County
Province	Alberta
Postal Code	T0L 1S0

Amenities

Parking Spaces	5
Parking	Single Garage Attached
# of Garages	1

Interior

Interior Features	Central Vacuum, No Smoking Home
Appliances	Dryer, Refrigerator, Stove(s), Washer
Heating	Forced Air, Natural Gas
Cooling	Central Air
Has Basement	Yes
Basement	Finished, Full

Exterior

Exterior Features	Private Yard
Lot Description	Back Yard, Front Yard, Landscaped, Level, Standard Shaped Lot
Roof	Asphalt Shingle
Construction	Vinyl Siding, Wood Frame
Foundation	Poured Concrete

Additional Information

Date Listed July 24th, 2025

Days on Market 16

Zoning RES

Listing Details

Listing Office RE/MAX REAL ESTATE - LETHBRIDGE



Data is supplied by Pillar 9â,,ç MLSÂ® System. Pillar 9â,,ç is the owner of the copyright in its MLSÂ® System. Data is deemed reliable but is not guaranteed accurate by Pillar 9â,,ç. The trademarks MLSÂ®, Multiple Listing ServiceÂ® and the associated logos are owned by The Canadian Real Estate Association (CREA) and identify the quality of services provided by real estate professionals who are members of CREA. Used under license.