

# \$419,000 - Range Road 200 Highway 13, Rural Camrose County

MLS® #A2240343

**\$419,000**

0 Bedroom, 0.00 Bathroom,  
Land on 25.15 Acres

NONE, Rural Camrose County, Alberta

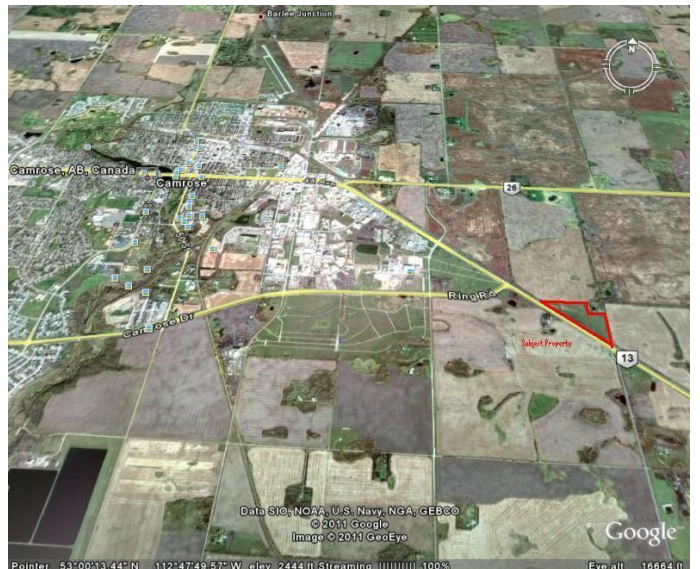
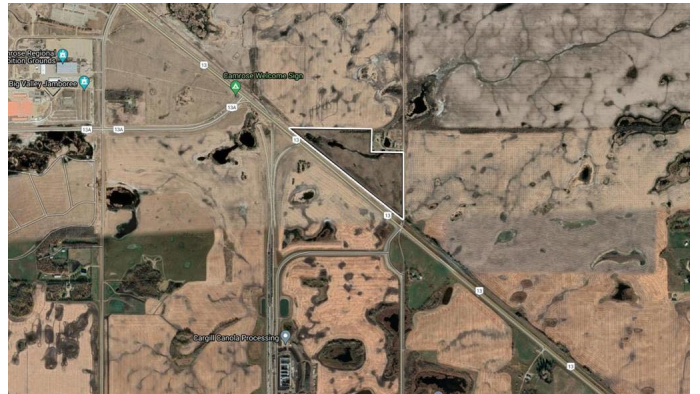
Discover a prime parcel of land on the outskirts of Camrose—just over 25 acres of versatile space! This exceptional property has been approved for rezoning, unlocking a multitude of possibilities for development. Whether you're envisioning a bustling commercial hub, an industrial complex, or an acreage subdivision, this location offers the flexibility to bring your plans to life. Its proximity to the city ensures convenient access to amenities, while still maintaining the peaceful charm of a rural setting. This is a fantastic opportunity for investors and developers looking to have a growing area with limitless potential for alternate uses. Don't miss your chance to secure this piece of land!

## Essential Information

MLS® #	A2240343
Price	\$419,000
Bathrooms	0.00
Acres	25.15
Type	Land
Sub-Type	Commercial Land
Status	Active

## Community Information

Address                      Range Road 200 Highway 13



Subdivision	NONE
City	Rural Camrose County
County	Camrose County
Province	Alberta
Postal Code	T4V 3P0

### **Additional Information**

Date Listed	July 16th, 2025
Days on Market	11
Zoning	A

### **Listing Details**

Listing Office	CIR Realty
----------------	------------

Data is supplied by Pillar 9â„¢ MLSÂ® System. Pillar 9â„¢ is the owner of the copyright in its MLSÂ® System. Data is deemed reliable but is not guaranteed accurate by Pillar 9â„¢. The trademarks MLSÂ®, Multiple Listing ServiceÂ® and the associated logos are owned by The Canadian Real Estate Association (CREA) and identify the quality of services provided by real estate professionals who are members of CREA. Used under license.