

# \$949,900 - 5, 421047 Range Road 24, Rural Ponoka County

MLS® #A2240238

**\$949,900**

6 Bedroom, 3.00 Bathroom, 1,929 sqft  
Residential on 1.23 Acres

NONE, Rural Ponoka County, Alberta

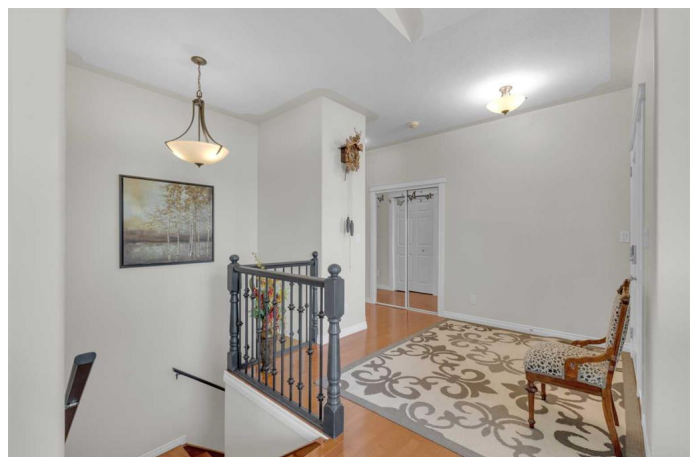
Experience the perfect blend of luxury and country charm in this stunning 1,929 sq ft bungalow just minutes from Rimbey. Nestled on a beautifully landscaped acreage, this home offers 6 spacious bedrooms, 3 baths, large, bright living spaces, and thoughtful upgrades throughout. The open-concept kitchen showcases newer appliances and quartz countertops, seamlessly connecting to the cozy living room complete with a gas fireplace.

Enjoy outdoor living year-round with covered Dura Decks front and back, a composite ground-level deck, and a private camp kitchen with fireplace—ideal for entertaining! Wired for a hot tub and complete with a Generac whole-home backup generator, this property is built for comfort and peace of mind.

Extras include: a heated triple car garage with hot/cold water, in-floor heat in garage and basement, maple hardwood flooring, asphalt driveway, an oversized garden shed and an automatic command gate just to name a few. Plus, pavement right to your front door! Don't miss this rare opportunity to own a move-in ready acreage that truly has it all.

Built in 2005

## Essential Information



MLS® #	A2240238
Price	\$949,900
Bedrooms	6
Bathrooms	3.00
Full Baths	3
Square Footage	1,929
Acres	1.23
Year Built	2005
Type	Residential
Sub-Type	Detached
Style	Acreage with Residence, Bungalow
Status	Active

### Community Information

Address	5, 421047 Range Road 24
Subdivision	NONE
City	Rural Ponoka County
County	Ponoka County
Province	Alberta
Postal Code	T0C 2J0

### Amenities

Parking Spaces	5
Parking	Triple Garage Attached
# of Garages	3

### Interior

Interior Features	Built-in Features, Ceiling Fan(s), Closet Organizers, Double Vanity, Kitchen Island, No Animal Home, No Smoking Home, Open Floorplan, Quartz Counters, Vaulted Ceiling(s), Vinyl Windows, Walk-In Closet(s)
Appliances	Dishwasher, Dryer, Microwave, Refrigerator, Stove(s), Washer
Heating	Forced Air, Natural Gas
Cooling	Central Air
Fireplace	Yes
# of Fireplaces	1
Fireplaces	Gas
Has Basement	Yes
Basement	Finished, Full

### Exterior

Exterior Features	Fire Pit, Garden, Private Entrance, Private Yard
Lot Description	Garden, Landscaped, No Neighbours Behind, Private, Treed
Roof	Asphalt Shingle
Construction	Vinyl Siding
Foundation	Poured Concrete

### **Additional Information**

Date Listed	July 16th, 2025
Days on Market	11
Zoning	3

### **Listing Details**

Listing Office	RE/MAX real estate central alberta
----------------	------------------------------------

Data is supplied by Pillar 9â„¢ MLSÂ® System. Pillar 9â„¢ is the owner of the copyright in its MLSÂ® System. Data is deemed reliable but is not guaranteed accurate by Pillar 9â„¢. The trademarks MLSÂ®, Multiple Listing ServiceÂ® and the associated logos are owned by The Canadian Real Estate Association (CREA) and identify the quality of services provided by real estate professionals who are members of CREA. Used under license.