

# \$580,000 - 26 Eldridge Crescent, Red Deer

MLS® #A2240178

## \$580,000

4 Bedroom, 3.00 Bathroom, 2,132 sqft

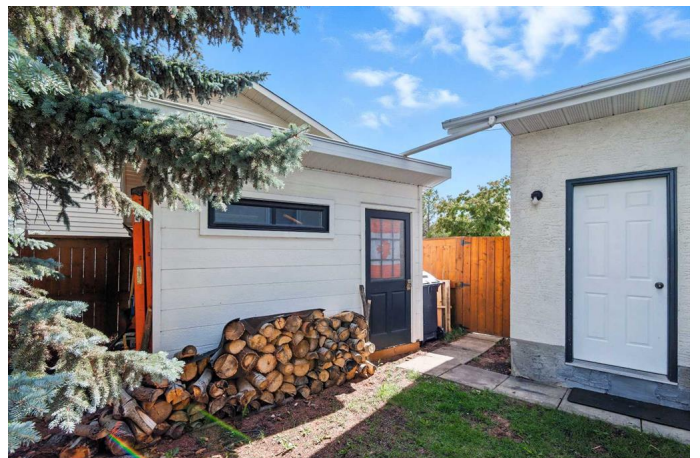
Residential on 0.20 Acres

Eastview Estates, Red Deer, Alberta

Welcome to your next family home spacious, beautifully updated, and backing onto a peaceful green space. Located on a quiet pie shaped lot, this two story home offers the perfect blend of style, comfort, and functionality. From the moment you walk in, youâ€™ll appreciate the warm and inviting feel created by natural light, engineered hardwood flooring, and charming design touches like exposed beams and a cozy wood burning fireplace. The main floor is ideal for both everyday living and entertaining, featuring an open layout and a show stopping kitchen thatâ€™s sure to impress. With custom cabinetry, quartz countertops, high end appliances including a gas stove with dual ovens, and a built in breakfast nook overlooking the backyard, this kitchen has been thoughtfully designed to be as beautiful as it is functional.

Upstairs offers the rare convenience of four bedrooms, including a spacious primary suite with a fully renovated ensuite complete with a walk in shower, double sinks, and a walk-in closet. A second full bathroom on this level has also been refreshed while maintaining its original character.

Step outside onto the west-facing DuraDeck and take in the view of the green space beyond a perfect spot to enjoy summer evenings. The backyard offers room to run and play, and a paved path behind the home leads to a nearby playground and sports courts, making this a great location for active families.



Back inside, youâ€™ll love the practical features like the updated mudroom/laundry space, additional storage, and the heated garage with newer insulated overhead door. The home is also equipped with A/C, in-floor heat in the basement, and two furnaces for year round comfort. With major updates already completed including roof, windows, upstairs carpet, and main level finishings this home is move in ready. The basement is undeveloped and offers great potential for future growth.

Beautifully maintained and full of thoughtful upgrades, this is a home you wonâ€™t want to miss.

Built in 1989

### Essential Information

MLS® #	A2240178
Price	\$580,000
Bedrooms	4
Bathrooms	3.00
Full Baths	2
Half Baths	1
Square Footage	2,132
Acres	0.20
Year Built	1989
Type	Residential
Sub-Type	Detached
Style	2 Storey
Status	Active

### Community Information

Address	26 Eldridge Crescent
Subdivision	Eastview Estates
City	Red Deer
County	Red Deer
Province	Alberta
Postal Code	T4R 2C9

## Amenities

Parking Spaces	4
Parking	Double Garage Attached
# of Garages	2

## Interior

Interior Features	Kitchen Island, Storage, Vinyl Windows, Walk-In Closet(s)
Appliances	Refrigerator
Heating	Forced Air, Natural Gas
Cooling	Central Air
Fireplace	Yes
# of Fireplaces	1
Fireplaces	Living Room, Wood Burning
Has Basement	Yes
Basement	Full, Unfinished

## Exterior

Exterior Features	Private Yard, Storage
Lot Description	Back Yard, Few Trees, Front Yard, Irregular Lot, Lawn
Roof	Shingle
Construction	Concrete, Stucco
Foundation	Poured Concrete

## Additional Information

Date Listed	July 16th, 2025
Days on Market	10
Zoning	R1

## Listing Details

Listing Office	eXp Realty
----------------	------------

Data is supplied by Pillar 9â„¢ MLSÂ® System. Pillar 9â„¢ is the owner of the copyright in its MLSÂ® System. Data is deemed reliable but is not guaranteed accurate by Pillar 9â„¢. The trademarks MLSÂ®, Multiple Listing ServiceÂ® and the associated logos are owned by The Canadian Real Estate Association (CREA) and identify the quality of services provided by real estate professionals who are members of CREA. Used under license.