

# \$13 - 104, 1601 Dunmore Road Se, Medicine Hat

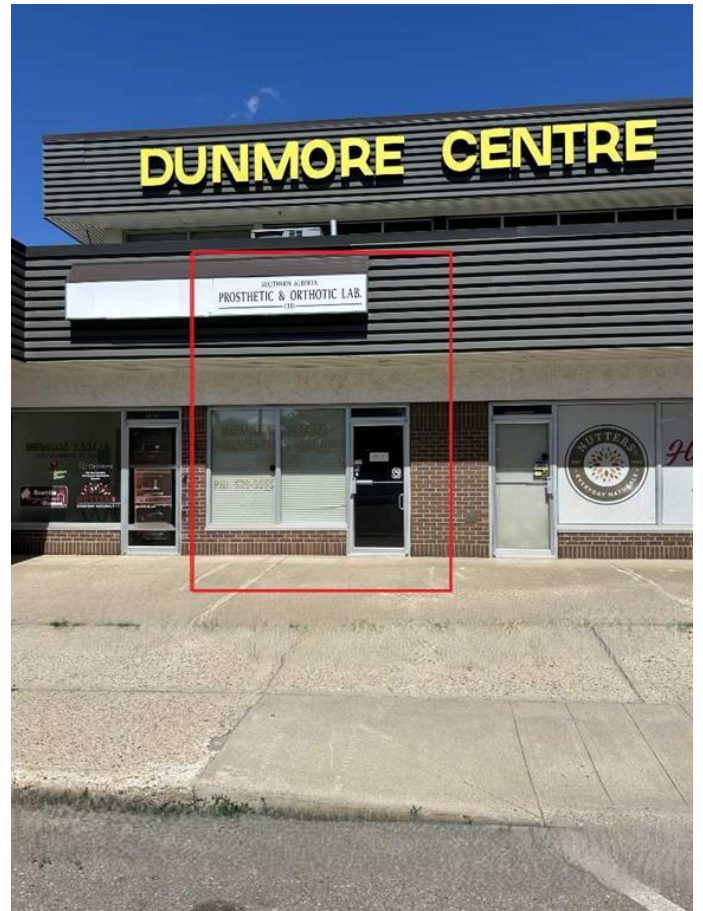
MLS® #A2239747

**\$13**

0 Bedroom, 0.00 Bathroom,  
Commercial on 0.00 Acres

Southview-Park Meadows, Medicine Hat,  
Alberta

This 1,612 sq ft main floor space is ideally located on high-traffic Dunmore Road, offering excellent visibility for your business. Currently set up as office space, it's perfectly suited for a doctor, dentist, or other professional practice. Enjoy a bright, welcoming reception area with large front windows and abundant natural light. Plenty of convenient street parking ensures easy access for clients and patients. A versatile and highly visible space to grow your practice. Operating costs estimated at \$3.82/sq ft



Built in 1980

## Essential Information

MLS® #	A2239747
Price	\$13
Bathrooms	0.00
Acres	0.00
Year Built	1980
Type	Commercial
Sub-Type	Office

Status Active

Community Information

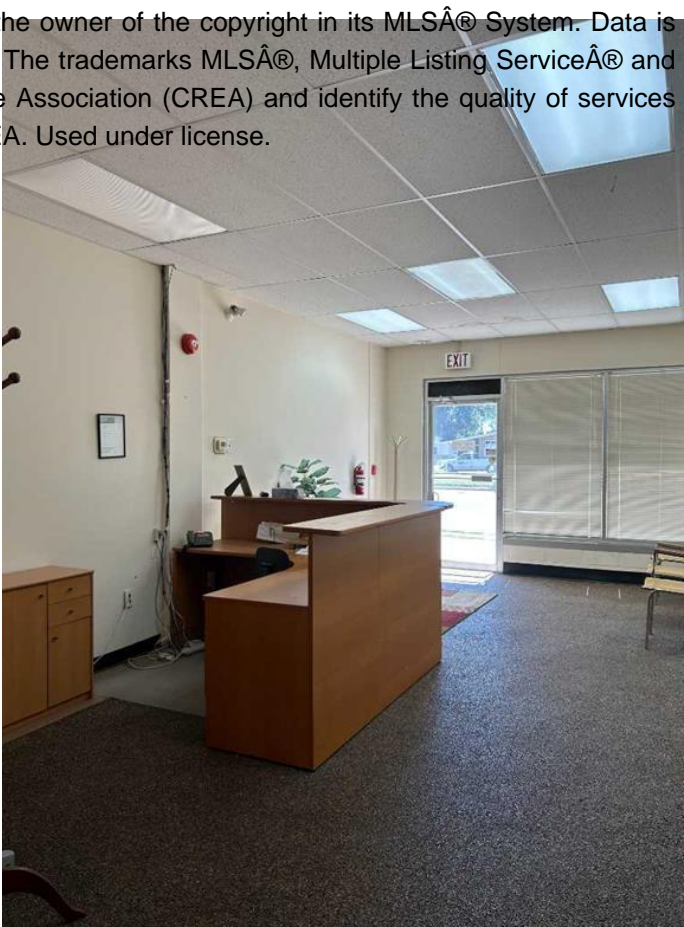
Address 104, 1601 Dunmore Road Se  
Subdivision Southview-Park Meadows  
City Medicine Hat  
County Medicine Hat  
Province Alberta  
Postal Code T1A 1Z8

Additional Information

Date Listed July 14th, 2025  
Days on Market 63

Listing Details

Listing Office RE/MAX MEDALTA REAL EST



Data is supplied by Pillar 9â„¢ MLSÂ® System. Pillar 9â„¢ is the owner of the copyright in its MLSÂ® System. Data is deemed reliable but is not guaranteed accurate by Pillar 9â„¢. The trademarks MLSÂ®, Multiple Listing ServiceÂ® and the associated logos are owned by The Canadian Real Estate Association (CREA) and identify the quality of services provided by real estate professionals who are members of CREA. Used under license.