

# \$150,000 - 260300 Writing Creek Crescent, Rural Rocky View County

MLS® #A2239364

**\$150,000**

0 Bedroom, 0.00 Bathroom,  
Commercial on 0.00 Acres

NONE, Rural Rocky View County, Alberta

An exceptional opportunity awaits! This prime corner retail unit on the main floor of New Horizon Mall is now available for sale. Strategically located directly near an exit, this highly visible shop benefits from maximum foot traffic, ensuring constant exposure for your business. Its prominent corner position offers extensive frontage, ideal for captivating window displays and prominent New Horizon Mall is a unique and bustling shopping destination, attracting a diverse customer base. Don't miss your chance to own a piece of this vibrant retail environment.

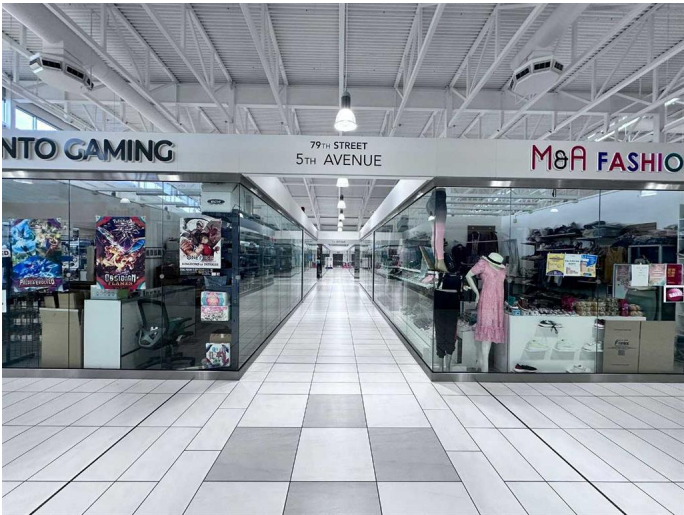
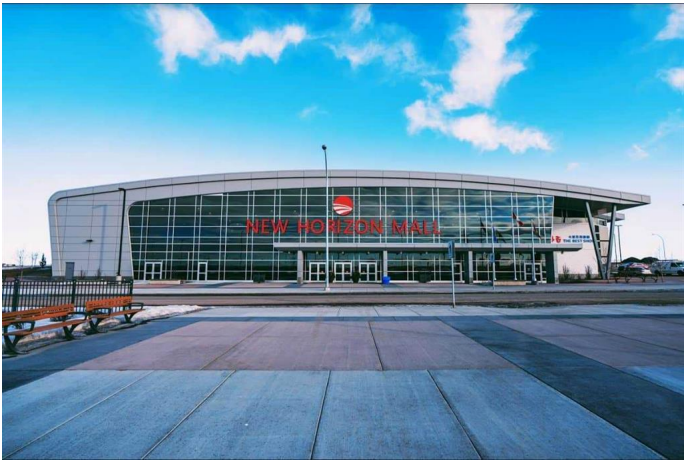
Built in 2018

## Essential Information

MLS® #	A2239364
Price	\$150,000
Bathrooms	0.00
Acres	0.00
Year Built	2018
Type	Commercial
Sub-Type	Retail
Status	Active

## Community Information

Address	260300 Writing Creek Crescent
Subdivision	NONE



City	Rural Rocky View County
County	Rocky View County
Province	Alberta
Postal Code	T4A 0X8

### **Additional Information**

Date Listed	July 12th, 2025
Days on Market	61
Zoning	DC

### **Listing Details**

Listing Office	Real Broker
----------------	-------------

Data is supplied by Pillar 9â„¢ MLS® System. Pillar 9â„¢ is the owner of the copyright in its MLS® System. Data is deemed reliable but is not guaranteed accurate by Pillar 9â„¢. The trademarks MLS®, Multiple Listing Service® and the associated logos are owned by The Canadian Real Estate Association (CREA) and identify the quality of services provided by real estate professionals who are members of CREA. Used under license.