

# \$180,000 - Range Road 222, Rural Peace No. 135, M.D. of

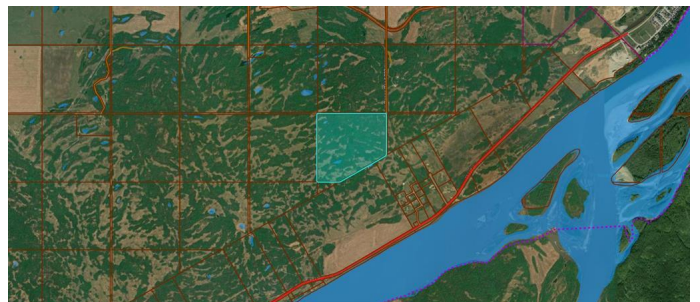
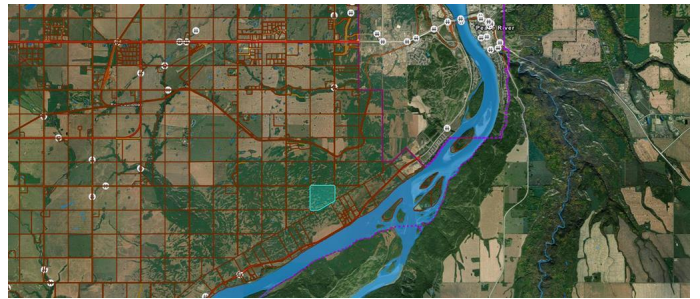
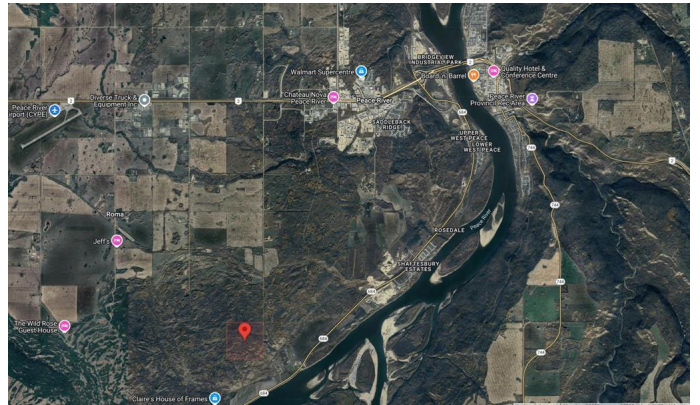
MLS® #A2239235

**\$180,000**

0 Bedroom, 0.00 Bathroom,  
Land on 139.70 Acres

NONE, Rural Peace No. 135, M.D. of, Alberta

THIS PROPERTY IS BEING SOLD BY TEAM AUCTIONS THROUGH AN UNRESERVED PUBLIC AUCTION SEPTEMBER 9TH TO 11TH, 2025. PRICE IS NOT A REFLECTION OF WHAT THE PROPERTY MAY SELL FOR, IS NOT THE ACTUAL LIST PRICE AND IS MERELY A POSTING. THE PROPERTY IS BEING SOLD AS IS, WHERE IS AND ALL POTENTIAL BUYERS TO VERIFY ALL PROPERTY DETAILS TO THEIR SATISFACTION INCLUDING BUT NOT LIMITED TO ZONING, PERMITTED USES, SET BACK RULES, TAXES, ETC. A Rare Opportunity With Unmatched River Valley Views! This is truly a one-of-a-kind property offering a unique setting and breathtaking panoramic views of the river and surrounding valley. Spanning an impressive 139.70 acres, this parcel sits high on the landscape, showcasing a scenic blend of rolling hills, natural contours, and scattered treesâ€”an ideal canvas for your dream home or private recreational retreat. Whether you're looking to build, camp, hike, or simply escape into nature, this property has the space and setting to do it all. The possibilities are endless with ample room for development, outdoor activities, or simply soaking in the peaceful, private atmosphere. Conveniently located just minutes from Peace River and the West Hill, you'll enjoy the best of both worldsâ€”quiet seclusion and easy access to town amenities.



Come explore this stunning piece of land for yourself and experience the views, space, and serenity it has to offer!

### Essential Information

MLS® #	A2239235
Price	\$180,000
Bathrooms	0.00
Acres	139.70
Type	Land
Sub-Type	Recreational
Status	Active

### Community Information

Address	Range Road 222
Subdivision	NONE
City	Rural Peace No. 135, M.D. of
County	Peace No. 135, M.D. of
Province	Alberta
Postal Code	T0H 1W0

### Additional Information

Date Listed	July 11th, 2025
Days on Market	62
Zoning	JPAG

### Listing Details

Listing Office	RE/MAX Northern Realty
----------------	------------------------

Data is supplied by Pillar 9â„¢ MLSÂ® System. Pillar 9â„¢ is the owner of the copyright in its MLSÂ® System. Data is deemed reliable but is not guaranteed accurate by Pillar 9â„¢. The trademarks MLSÂ®, Multiple Listing ServiceÂ® and the associated logos are owned by The Canadian Real Estate Association (CREA) and identify the quality of services provided by real estate professionals who are members of CREA. Used under license.