

# \$459,900 - 10 Heenan Crescent, Sylvan Lake

MLS® #A2239036

**\$459,900**

5 Bedroom, 3.00 Bathroom, 1,280 sqft

Residential on 0.17 Acres

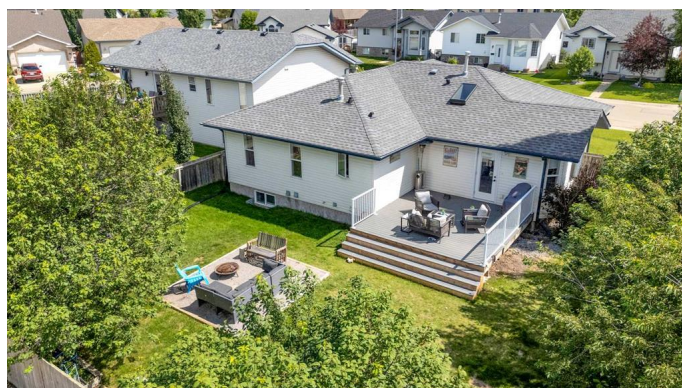
Hewlett Park, Sylvan Lake, Alberta

Fresh, bright, and move-in ready! This family, friendly, 5-bedroom, 3-bathroom bungalow in desirable Hewlett Park offers space, style, and smart updates for today's busy families. Located on an interior corner lot with alley access, this home features a fresh, professionally painted white kitchen that feels clean and modern, plus updated hall and basement paint further enhancing the open and inviting layout. The main floor boasts 3 bedrooms including a generous primary bedroom with ensuite, while the fully finished basement adds two more bedrooms, a 3 piece bath, and a large family room all warmed with infloor heat. Enjoy the convenience of a heated attached garage, main floor laundry, a large nicely treelined and fenced yard, and close proximity to schools, parks, Nexsource Centre, shopping, and of course the lake. A well-cared-for property in one of Sylvan Lake's most walkable locations – perfect for growing families or anyone looking for a practical and stylish place to home.

Built in 2000

## Essential Information

MLS® #	A2239036
Price	\$459,900
Bedrooms	5
Bathrooms	3.00
Full Baths	3



Square Footage	1,280
Acres	0.17
Year Built	2000
Type	Residential
Sub-Type	Detached
Style	Bungalow
Status	Active

### Community Information

Address	10 Heenan Crescent
Subdivision	Hewlett Park
City	Sylvan Lake
County	Red Deer County
Province	Alberta
Postal Code	T4S 1Y6

### Amenities

Parking Spaces	4
Parking	Alley Access, Concrete Driveway, Double Garage Attached, Driveway, Garage Door Opener, Garage Faces Front, Heated Garage, Insulated
# of Garages	2

### Interior

Interior Features	Ceiling Fan(s), Closet Organizers, Kitchen Island, Laminate Counters, Pantry, Vaulted Ceiling(s), Sump Pump(s)
Appliances	See Remarks
Heating	Forced Air, Natural Gas
Cooling	None
Fireplaces	Gas
Has Basement	Yes
Basement	Finished, Full

### Exterior

Exterior Features	Fire Pit, Garden, Private Yard
Lot Description	Back Lane, Back Yard, City Lot, Garden, Interior Lot, Landscaped, Lawn, Level, Many Trees, Treed
Roof	Asphalt Shingle
Construction	Concrete, Stucco, Vinyl Siding, Wood Frame
Foundation	Poured Concrete

**Additional Information**

Date Listed	July 11th, 2025
Days on Market	7
Zoning	R1

**Listing Details**

Listing Office	Greater Property Group
----------------	------------------------

Data is supplied by Pillar 9â„¢ MLS® System. Pillar 9â„¢ is the owner of the copyright in its MLS® System. Data is deemed reliable but is not guaranteed accurate by Pillar 9â„¢. The trademarks MLS®, Multiple Listing Service® and the associated logos are owned by The Canadian Real Estate Association (CREA) and identify the quality of services provided by real estate professionals who are members of CREA. Used under license.