

\$329,900 - 20 Merrifield Place, Whitecourt

MLS® #A2238048

\$329,900

5 Bedroom, 3.00 Bathroom, 1,153 sqft

Residential on 0.16 Acres

NONE, Whitecourt, Alberta

Welcome to 20 Merrifield Place – a well-kept 5-bedroom, 3-bathroom home tucked away in a peaceful cul-de-sac in the desirable Valley subdivision. Offering 1,153 sq ft on the main floor plus a fully finished basement, there’s plenty of space here for the whole family to spread out and enjoy.

Built in 1998, this home features a thoughtful layout with a natural gas fireplace on the main level and a wood stove in the basement for added comfort and charm. Stay cozy year-round with forced air heating and central air conditioning.

The main floor offers a bright kitchen, cozy living room, and three bedrooms, including a 3-piece ensuite and a full main bathroom. The basement includes two additional bedrooms, a third bathroom, and versatile space ideal for a family room, rec room, or home office.

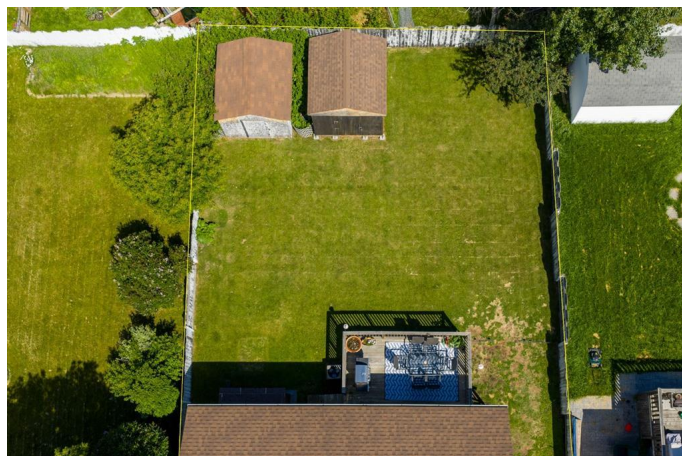
Located close to walking trails, parks, schools, and shopping, this home combines comfort, function, and location. A perfect fit for growing families or those seeking extra room to live and work.

Built in 1998

Essential Information

MLS® # A2238048

Price \$329,900



Bedrooms	5
Bathrooms	3.00
Full Baths	3
Square Footage	1,153
Acres	0.16
Year Built	1998
Type	Residential
Sub-Type	Detached
Style	Bungalow
Status	Active

Community Information

Address	20 Merrifield Place
Subdivision	NONE
City	Whitecourt
County	Woodlands County
Province	Alberta
Postal Code	T7S 1T3

Amenities

Parking Spaces	2
Parking	Parking Pad, Concrete Driveway, On Street, RV Access/Parking

Interior

Interior Features	Built-in Features, Vaulted Ceiling(s)
Appliances	Central Air Conditioner, Dishwasher, Refrigerator, Washer/Dryer, Stove(s)
Heating	Forced Air, Natural Gas, Wood Stove
Cooling	Central Air
Fireplace	Yes
# of Fireplaces	2
Fireplaces	Gas, Basement, EPA Certified Wood Stove, Family Room
Has Basement	Yes
Basement	Finished, Full

Exterior

Exterior Features	Private Yard, Private Entrance
Lot Description	Back Yard, Landscaped, Front Yard
Roof	Shingle

Construction	Concrete, Vinyl Siding, Wood Frame
Foundation	Poured Concrete, Combination, Wood, Slab

Additional Information

Date Listed	July 7th, 2025
Days on Market	49
Zoning	R-1C

Listing Details

Listing Office	RE/MAX ADVANTAGE (WHITECOURT)
----------------	-------------------------------

Data is supplied by Pillar 9â„¢ MLS® System. Pillar 9â„¢ is the owner of the copyright in its MLS® System. Data is deemed reliable but is not guaranteed accurate by Pillar 9â„¢. The trademarks MLS®, Multiple Listing Service® and the associated logos are owned by The Canadian Real Estate Association (CREA) and identify the quality of services provided by real estate professionals who are members of CREA. Used under license.