

\$549,800 - 69241 Rr 65, Grovedale

MLS® #A2237962

\$549,800

4 Bedroom, 2.00 Bathroom, 1,152 sqft
Residential on 38.05 Acres

NONE, Grovedale, Alberta

Completely Private Acreage with a Creek Running thru Your Backyard! Located just 5 mins from Grovedale, this property has so much potential. The bungalow is 1152 sq/ft with 4 beds, 2 baths, covered deck, a 100 year old wood stove in the kitchen, and a wood stove in the basement. The Yurt is 855 sq/ft with an ICF foundation with a kitchen, 2 bathroom, and nice deck. The views will amaze you. 38 acres in total with 20 used for Hay.

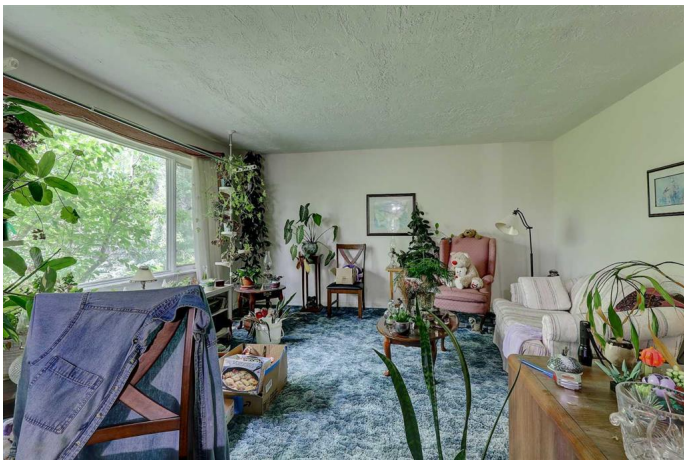
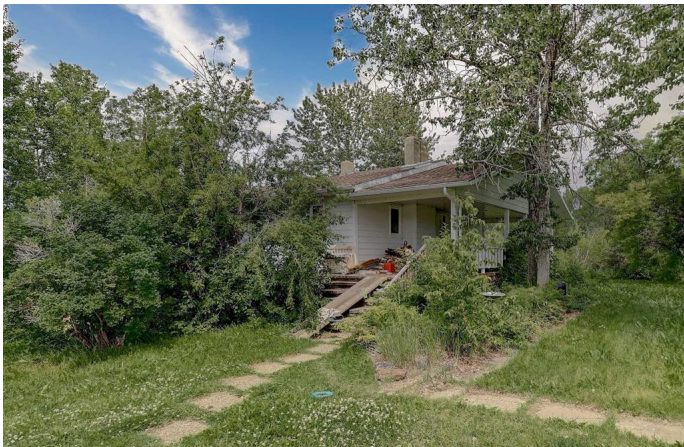
Built in 1979

Essential Information

MLS® #	A2237962
Price	\$549,800
Bedrooms	4
Bathrooms	2.00
Full Baths	2
Square Footage	1,152
Acres	38.05
Year Built	1979
Type	Residential
Sub-Type	Detached
Style	Acreage with Residence, Bungalow
Status	Active

Community Information

Address	69241 Rr 65
Subdivision	NONE



City	Grovedale
County	Greenview No. 16, M.D. of
Province	Alberta
Postal Code	T0H 1X0

Amenities

Parking	Parking Pad
---------	-------------

Interior

Interior Features	Sump Pump(s)
Appliances	See Remarks
Heating	Floor Furnace
Cooling	None
Fireplace	Yes
# of Fireplaces	2
Fireplaces	Wood Burning
Has Basement	Yes
Basement	Finished, Full

Exterior

Exterior Features	Other
Lot Description	Creek/River/Stream/Pond
Roof	Asphalt Shingle
Construction	Other
Foundation	Wood

Additional Information

Date Listed	July 10th, 2025
Days on Market	66
Zoning	A1

Listing Details

Listing Office	Sutton Group Grande Prairie Professionals
----------------	---

Data is supplied by Pillar 9â„¢ MLS® System. Pillar 9â„¢ is the owner of the copyright in its MLS® System. Data is deemed reliable but is not guaranteed accurate by Pillar 9â„¢. The trademarks MLS®, Multiple Listing Service® and the associated logos are owned by The Canadian Real Estate Association (CREA) and identify the quality of services provided by real estate professionals who are members of CREA. Used under license.