

# \$605,000 - 122, 300 Palliser Lane E, Canmore

MLS® #A2237440

**\$605,000**

0 Bedroom, 0.00 Bathroom, 732 sqft

Multi-Family on 0.00 Acres

Benchlands, Canmore, Alberta

Weekend get away or full time living in the mountains. This building has a gyn for you convenience. Location is close to trails and free bus service to go downtown Canmore. 2 bedroom, and 1 bull bathroom. Open concept from kitchen to living room with a gas fireplace. On ground floor with a sizeable covered deck and views of our famous Three Sisters mountain range.

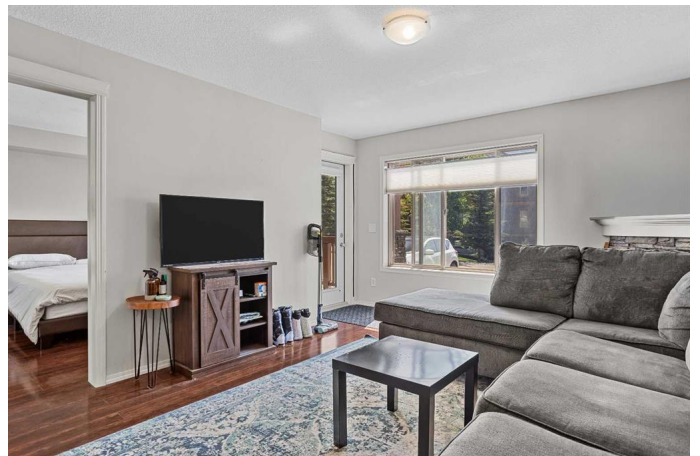
Built in 2009

## Essential Information

MLS® #	A2237440
Price	\$605,000
Bathrooms	0.00
Square Footage	732
Acres	0.00
Year Built	2009
Type	Multi-Family
Sub-Type	Apartment
Style	Single Level Unit
Status	Active

## Community Information

Address	122, 300 Palliser Lane E
Subdivision	Benchlands
City	Canmore
County	Bighorn No. 8, M.D. of
Province	Alberta



Postal Code T1W 0H5

### Amenities

Amenities Bicycle Storage, Elevator(s), Fitness Center  
Utilities Cable Available, Garbage Collection, Heating Paid For, Natural Gas Available  
Parking Spaces 1  
Parking Parking Pad

### Interior

Appliances Built-In Refrigerator, Dishwasher, Electric Range, Washer/Dryer  
Heating Forced Air, Natural Gas  
Fireplace Yes  
# of Fireplaces 1  
Fireplaces Electric, Living Room  
# of Stories 4  
Basement None

### Exterior

Construction Concrete, Wood Frame  
Foundation Poured Concrete

### Additional Information

Date Listed July 3rd, 2025  
Days on Market 2  
Zoning 0050  
HOA Fees 484  
HOA Fees Freq. MON

### Listing Details

Listing Office CENTURY 21 NORDIC REALTY

Data is supplied by Pillar 9â„¢ MLS® System. Pillar 9â„¢ is the owner of the copyright in its MLS® System. Data is deemed reliable but is not guaranteed accurate by Pillar 9â„¢. The trademarks MLS®, Multiple Listing Service® and the associated logos are owned by The Canadian Real Estate Association (CREA) and identify the quality of services provided by real estate professionals who are members of CREA. Used under license.