

\$529,000 - 229 Martinglen Way Ne, Calgary

MLS® #A2237336

\$529,000

5 Bedroom, 2.00 Bathroom, 953 sqft

Residential on 0.07 Acres

Martindale, Calgary, Alberta

Beautiful duplex conveniently located near schools and shopping centre. Features include a finished basement, upstairs hardwood floors, and brand new appliances, including a dishwasher and gas stove. Upstairs offers spacious living, while the downstairs includes 2 bedroomsâ€”perfect for families or rental income. Donâ€™t miss this great opportunity!. Excellent location-close to schools, shopping and transportation.

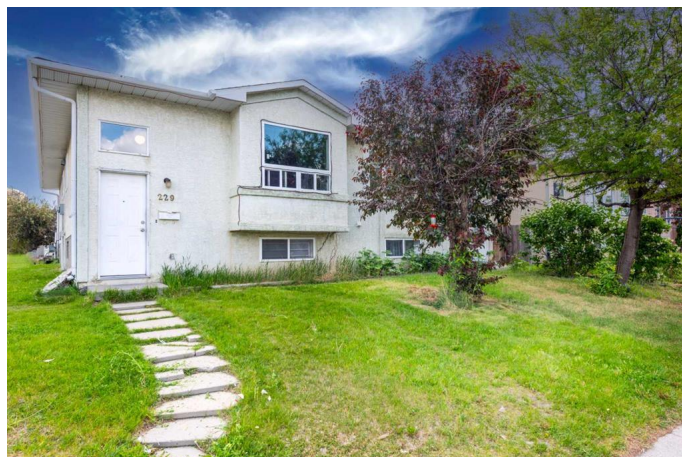
Built in 1992

Essential Information

MLS® #	A2237336
Price	\$529,000
Bedrooms	5
Bathrooms	2.00
Full Baths	2
Square Footage	953
Acres	0.07
Year Built	1992
Type	Residential
Sub-Type	Semi Detached
Style	Side by Side, Bi-Level
Status	Active

Community Information

Address	229 Martinglen Way Ne
Subdivision	Martindale



City	Calgary
County	Calgary
Province	Alberta
Postal Code	T3J 3L2

Amenities

Parking Spaces	1
Parking	Single Garage Detached
# of Garages	1

Interior

Interior Features	No Animal Home, No Smoking Home, Separate Entrance
Appliances	Dryer, Electric Stove, Range Hood, Refrigerator, Washer, Window Coverings
Heating	Forced Air
Cooling	None
Has Basement	Yes
Basement	Finished, Full

Exterior

Exterior Features	Playground
Lot Description	Back Lane, Back Yard, Landscaped, Corner Lot, Close to Clubhouse
Roof	Asphalt
Construction	Stucco, Wood Frame
Foundation	Poured Concrete

Additional Information

Date Listed	July 5th, 2025
Days on Market	3
Zoning	R-CG

Listing Details

Listing Office	CIR Realty
----------------	------------

Data is supplied by Pillar 9â„¢ MLS® System. Pillar 9â„¢ is the owner of the copyright in its MLS® System. Data is deemed reliable but is not guaranteed accurate by Pillar 9â„¢. The trademarks MLS®, Multiple Listing Service® and the associated logos are owned by The Canadian Real Estate Association (CREA) and identify the quality of services provided by real estate professionals who are members of CREA. Used under license.