

\$164,900 - #6, 241016 Twp 474, Millet

MLS® #A2236899

\$164,900

0 Bedroom, 0.00 Bathroom,
Land on 3.81 Acres

NONE, Millet, Alberta

Your Dream Acreage Awaits! 3.8 Acres Near
Millet & Leduc.

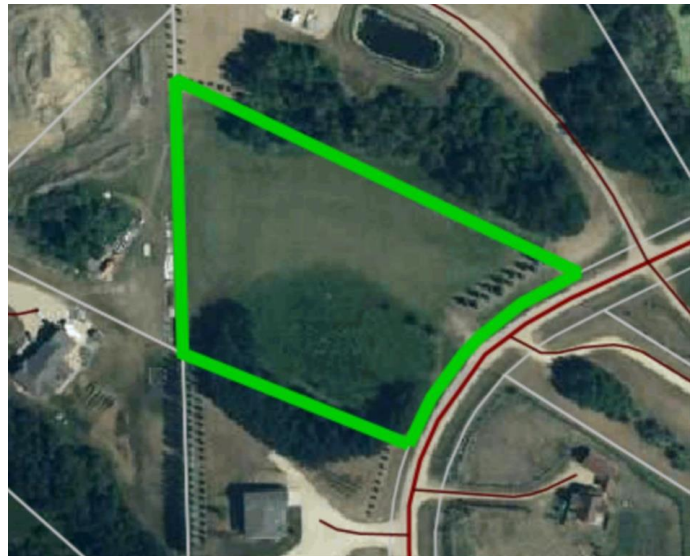
Discover the perfect spot to build your dream home and shop on this beautiful 3.8-acre parcel, ideally located close to Millet and Leduc. Nestled in the established subdivision of KD Acres, this property offers the best of country living with easy access to city amenities.

All services are available, making it ready for your vision. The spacious lot provides excellent building sites for both a home and a shop, with plenty of room to spare. Enjoy nearby golfing and recreational opportunities, all while soaking in the peace and tranquility of acreage life.

Don't miss this chance to create the lifestyle you've always wanted!

Essential Information

MLS® #	A2236899
Price	\$164,900
Bathrooms	0.00
Acres	3.81
Type	Land
Sub-Type	Residential Land
Status	Active



Community Information

Address	#6, 241016 Twp 474
Subdivision	NONE
City	Millet
County	Wetaskiwin No. 10, County of
Province	Alberta
Postal Code	T0C1Z0

Additional Information

Date Listed	July 7th, 2025
Days on Market	2
Zoning	Country Residential

Listing Details

Listing Office	RE/MAX Real Estate (Edmonton)
----------------	-------------------------------

Data is supplied by Pillar 9â„¢ MLS® System. Pillar 9â„¢ is the owner of the copyright in its MLS® System. Data is deemed reliable but is not guaranteed accurate by Pillar 9â„¢. The trademarks MLS®, Multiple Listing Service® and the associated logos are owned by The Canadian Real Estate Association (CREA) and identify the quality of services provided by real estate professionals who are members of CREA. Used under license.