

# \$1,100,000 - 1439 6 Street Nw, Calgary

MLS® #A2235713

**\$1,100,000**

0 Bedroom, 0.00 Bathroom,

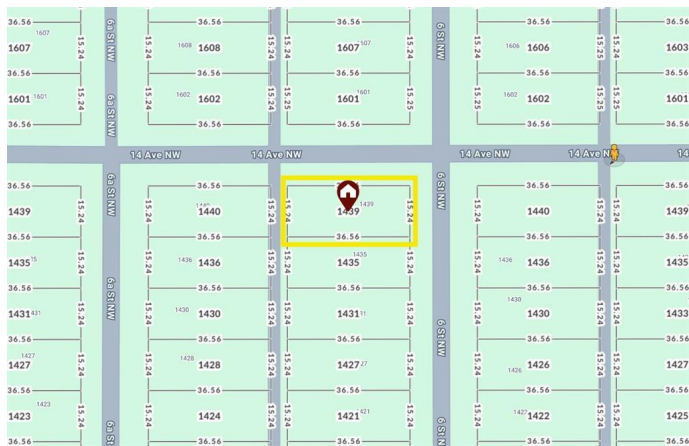
Land on 0.14 Acres

Rosedale, Calgary, Alberta

Exceptional opportunity for builders and developers in the prestigious community of Rosedale. This 50x120 ft corner lot at 14 Ave & 6 St NW offers endless potential in one of Calgary’s most sought-after neighbourhoods. Surrounded by tree-lined streets, Rosedale is known for its strong sense of community, historic charm, and unbeatable location.

Walk to Rosedale School (K-9) and enjoy easy access to SAIT, Crescent Heights High School, and Alberta University of the Arts. Just steps to McHugh Bluff, Prince’s Island Park, and minutes to downtown, Kensington, and the Bow River pathways.

A rare chance to build your dream home or a luxury infill in an A+ location.



## Essential Information

MLS® #	A2235713
Price	\$1,100,000
Bathrooms	0.00
Acres	0.14
Type	Land
Sub-Type	Residential Land
Status	Active

## Community Information

Address	1439 6 Street Nw
---------	------------------

Subdivision	Rosedale
City	Calgary
County	Calgary
Province	Alberta
Postal Code	T2M3E7

### **Additional Information**

Date Listed	June 30th, 2025
Days on Market	1
Zoning	R-CG

### **Listing Details**

Listing Office	The Real Estate District
----------------	--------------------------

Data is supplied by Pillar 9â„¢ MLSÂ® System. Pillar 9â„¢ is the owner of the copyright in its MLSÂ® System. Data is deemed reliable but is not guaranteed accurate by Pillar 9â„¢. The trademarks MLSÂ®, Multiple Listing ServiceÂ® and the associated logos are owned by The Canadian Real Estate Association (CREA) and identify the quality of services provided by real estate professionals who are members of CREA. Used under license.