

\$1,095,000 - 158 Speargrass Crescent, Carseland

MLS® #A2234094

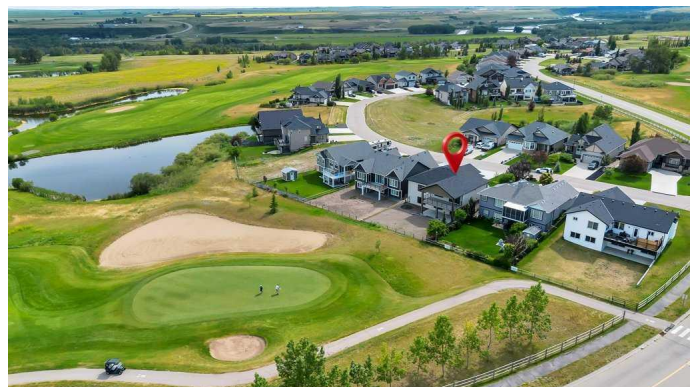
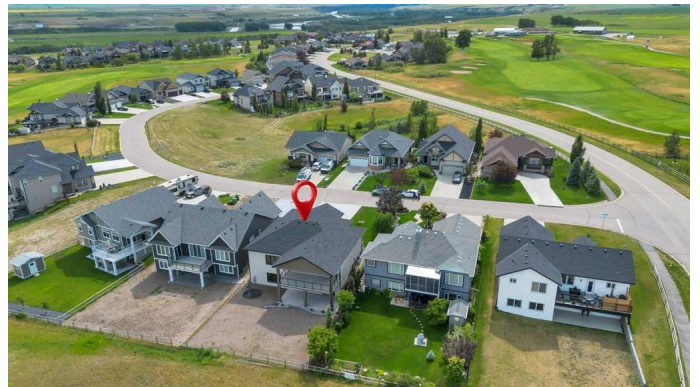
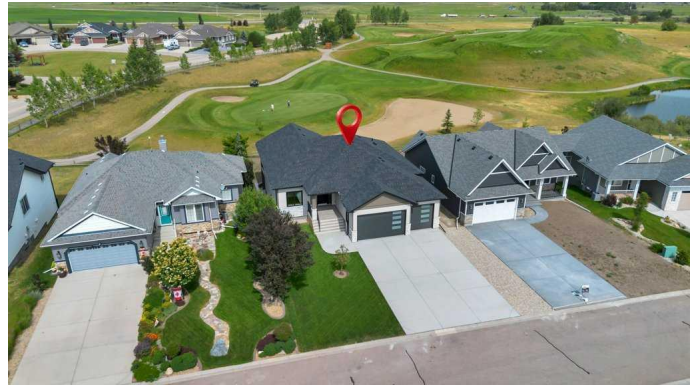
\$1,095,000

4 Bedroom, 4.00 Bathroom, 1,625 sqft

Residential on 0.18 Acres

NONE, Carseland, Alberta

Brand-New Walkout Bungalow Backing on the 11th Green at Speargrass Golf Course. Experience luxury living in this beautifully crafted 4-BEDROOM, 4-BATHROOM DESIGNER BUNGALOW, offering over 3,100 sq. ft. of exquisite, thoughtfully designed space. Ideally located just 40 minutes east of Calgary, this stunning walkout home backs directly onto the 11th green of the Speargrass Golf Course and boasts a TRIPLE ATTACHED GARAGE with soaring 11 FT CEILINGS and 9 FT DOORS. Step through the impressive 42" FRONT DOOR into a bright, open-concept layout enhanced by PREMIUM WOOD LAMINATE AND TILE FLOORING. The gourmet kitchen is a true showstopper, featuring QUARTZ COUNTERTOPS, CUSTOM CABINETRY, DESIGNER BACKSPLASH, A LARGE ISLAND, HIGH-END APPLIANCES, AND A SPACIOUS PANTRY. The open DINING AREA, accented by STRIKING LIGHT FIXTURES, is ideal for hosting, while the INVITING LIVING ROOM with a sleek ELECTRIC FIREPLACE provides a cozy setting for everyday comfort. Step out to the COVERED UPPER DECK, finished with DURADEK and GLASS RAILINGS, perfect for BBQs and enjoying the panoramic golf course views. The primary suite is a luxurious retreat, complete with a SPA-INSPIRED ENSUITE featuring a massive tiled shower and dual sinks. A spacious second bedroom, full bathroom, and mudroom with custom bench and cabinetry enhance the main level, along



with a large laundry room offering a deep sink, custom cabinetry, and side-by-side washer and dryer. The FULLY DEVELOPED WALKOUT BASEMENT is an entertainerâ€™s dream with a wet bar, second fireplace, two additional bedrooms, two full bathrooms, and direct access to the beautifully landscaped backyard with retaining walls and sweeping golf course views. Built with quality and durability in mind, this home features Hardie board siding, Lux triple-pane aluminum-clad windows, central air conditioning, LED lighting, Level 4 impact-resistant shingles, fireguard drywall, Rockwool insulation, and 8-foot interior doors throughout. Donâ€™t miss this rare opportunity to own a stunning home in an unbeatable locationâ€”book your private showing today!

Built in 2025

Essential Information

MLS® #	A2234094
Price	\$1,095,000
Bedrooms	4
Bathrooms	4.00
Full Baths	4
Square Footage	1,625
Acres	0.18
Year Built	2025
Type	Residential
Sub-Type	Detached
Style	Bungalow
Status	Active

Community Information

Address	158 Speargrass Crescent
Subdivision	NONE
City	Carseland
County	Wheatland County

Province	Alberta
Postal Code	T0J 0M0

Amenities

Amenities	Golf Course
Parking Spaces	9
Parking	Triple Garage Attached
# of Garages	3

Interior

Interior Features	Built-in Features, High Ceilings, Kitchen Island, No Animal Home, Open Floorplan, Pantry, Quartz Counters, Recreation Facilities, See Remarks, Storage, Vinyl Windows, Wet Bar
Appliances	Bar Fridge, Central Air Conditioner, Dishwasher, Electric Range, Microwave, Range Hood, Refrigerator, Washer/Dryer
Heating	Forced Air, Natural Gas
Cooling	Central Air
Fireplace	Yes
# of Fireplaces	2
Fireplaces	Basement, Electric, Living Room, Tile
Has Basement	Yes
Basement	Finished, Full, Walk-Out

Exterior

Exterior Features	Other
Lot Description	Backs on to Park/Green Space, Lawn, No Neighbours Behind, On Golf Course, See Remarks, Views
Roof	Asphalt Shingle
Construction	Cement Fiber Board, Stone
Foundation	Poured Concrete

Additional Information

Date Listed	July 5th, 2025
Days on Market	52
Zoning	450
HOA Fees	50
HOA Fees Freq.	ANN

Listing Details

Listing Office	RE/MAX Landan Real Estate
----------------	---------------------------

Data is supplied by Pillar 9â„¢ MLS® System. Pillar 9â„¢ is the owner of the copyright in its MLS® System. Data is deemed reliable but is not guaranteed accurate by Pillar 9â„¢. The trademarks MLS®, Multiple Listing Service® and the associated logos are owned by The Canadian Real Estate Association (CREA) and identify the quality of services provided by real estate professionals who are members of CREA. Used under license.