

\$499,900 - 325031 Rge Rd 255, Rural Kneehill County

MLS® #A2232423

\$499,900

3 Bedroom, 2.00 Bathroom, 1,904 sqft
Residential on 10.55 Acres

NONE, Rural Kneehill County, Alberta

Peaceful Country Living on a Private,
Tree-Lined Acreage

Escape to this serene and secluded acreage, surrounded by mature trees and complete with a fully renovated 3-bedroom home that blends modern comfort with rustic charm. Inside, no detail has been overlookedâ€”every inch has been thoughtfully upgraded to create a warm and inviting living space.

For those who value space and versatility, the property features an impressive array of outbuildings:

18x24 Heated Shop â€” perfect for projects or extra storage

30x40 Barn with Attached 40x100 Animal Shelter â€” ideal for horse lovers or hobby farming

55x30 Equipment Shed â€” ample space for machinery or additional storage

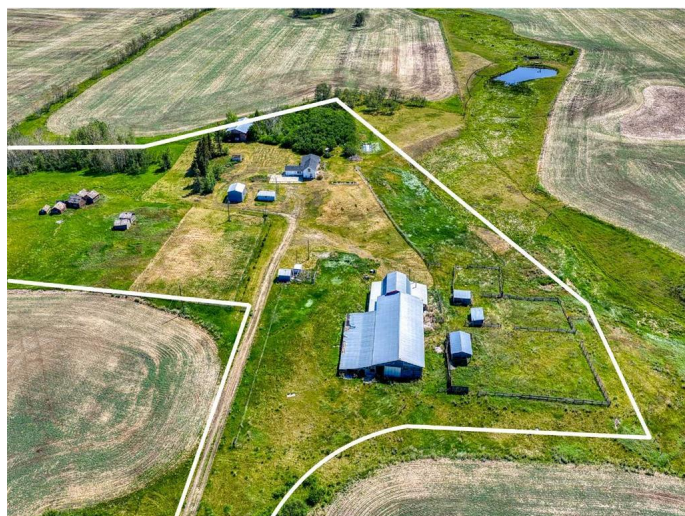
Whether you're looking for a peaceful retreat, a horse property, or simply more room to live and work, this acreage has it all.

Built in 1945

Essential Information

MLS® # A2232423

Price \$499,900



| | |
|----------------|----------------------------------|
| Bedrooms | 3 |
| Bathrooms | 2.00 |
| Full Baths | 2 |
| Square Footage | 1,904 |
| Acres | 10.55 |
| Year Built | 1945 |
| Type | Residential |
| Sub-Type | Detached |
| Style | 2 Storey, Acreage with Residence |
| Status | Active |

Community Information

| | |
|-------------|-----------------------|
| Address | 325031 Rge Rd 255 |
| Subdivision | NONE |
| City | Rural Kneehill County |
| County | Kneehill County |
| Province | Alberta |
| Postal Code | T0M 2B0 |

Amenities

| | |
|--------------|--------------------------------------|
| Parking | Heated Garage, Quad or More Detached |
| # of Garages | 4 |

Interior

| | |
|-------------------|---|
| Interior Features | Breakfast Bar, Built-in Features, No Animal Home, No Smoking Home |
| Appliances | Dryer, Electric Stove, Refrigerator, Washer, Window Coverings |
| Heating | Forced Air, Natural Gas |
| Cooling | None |
| Has Basement | Yes |
| Basement | Crawl Space, Partial |

Exterior

| | |
|-------------------|---|
| Exterior Features | Fire Pit, Private Yard |
| Lot Description | Back Yard, Backs on to Park/Green Space, Farm, Front Yard, Gentle Sloping, Many Trees, Native Plants, No Neighbours Behind, Pasture, Private, Secluded, Treed, Views, Meadow, Rolling Slope |
| Roof | Asphalt Shingle |
| Construction | Wood Frame |
| Foundation | Block |

Additional Information

| | |
|----------------|-----------------|
| Date Listed | June 18th, 2025 |
| Days on Market | 2 |
| Zoning | AG |

Listing Details

| | |
|----------------|---------------------------|
| Listing Office | RE/MAX Landan Real Estate |
|----------------|---------------------------|

Data is supplied by Pillar 9â„¸ MLSÂ® System. Pillar 9â„¸ is the owner of the copyright in its MLSÂ® System. Data is deemed reliable but is not guaranteed accurate by Pillar 9â„¸. The trademarks MLSÂ®, Multiple Listing ServiceÂ® and the associated logos are owned by The Canadian Real Estate Association (CREA) and identify the quality of services provided by real estate professionals who are members of CREA. Used under license.