

# \$2,888,888 - 59 East Lake Crescent Ne, Airdrie

MLS® #A2231297

**\$2,888,888**

0 Bedroom, 0.00 Bathroom,  
Commercial on 0.00 Acres

East Lake Industrial, Airdrie, Alberta

100% LEASED\*\*CASH COW WITH  
NUMEROUS RENOVATIONS \*\* This prime  
income-generating investment is located on  
approximately 1.07 acres, just minutes from  
the main highway. Previously a car wash  
equipped with 12â€™™ and 16â€™™ overhead  
doors, the property has been converted into a  
mechanic shop for cars and trucks, a car  
dealership, and outdoor storage. Current  
tenants are a Heavy duty Mechanic pay....  
Automotive Mechanic Shop.... Two trailers  
rented out to (Two car dealerships)... Land  
size, property taxes, and building dimensions  
to be confirmed for accuracy.

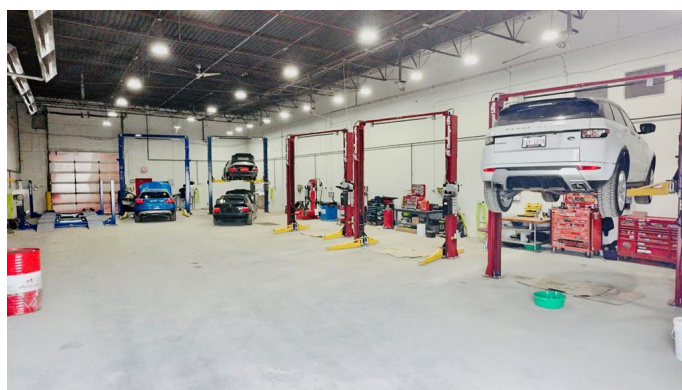
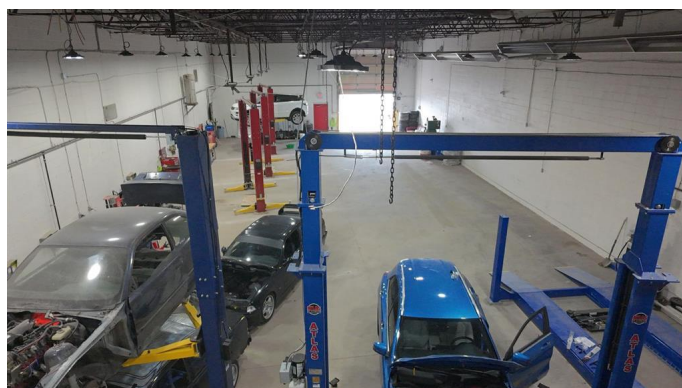
Built in 1970

## Essential Information

|            |             |
|------------|-------------|
| MLS® #     | A2231297    |
| Price      | \$2,888,888 |
| Bathrooms  | 0.00        |
| Acres      | 0.00        |
| Year Built | 1970        |
| Type       | Commercial  |
| Sub-Type   | Industrial  |
| Status     | Active      |

## Community Information

|             |                          |
|-------------|--------------------------|
| Address     | 59 East Lake Crescent Ne |
| Subdivision | East Lake Industrial     |
| City        | Airdrie                  |



|             |         |
|-------------|---------|
| County      | Airdrie |
| Province    | Alberta |
| Postal Code | T4A 2H5 |

### **Amenities**

|                |    |
|----------------|----|
| Parking Spaces | 30 |
|----------------|----|

### **Interior**

|         |       |
|---------|-------|
| Heating | Other |
| Cooling | Other |

### **Exterior**

|                 |       |
|-----------------|-------|
| Lot Description | Other |
| Roof            | Flat  |
| Construction    | Mixed |

### **Additional Information**

|                |                 |
|----------------|-----------------|
| Date Listed    | June 15th, 2025 |
| Days on Market | 48              |
| Zoning         | IB-2            |

### **Listing Details**

|                |                                    |
|----------------|------------------------------------|
| Listing Office | RE/MAX Real Estate (Mountain View) |
|----------------|------------------------------------|

Data is supplied by Pillar 9â„¢ MLS® System. Pillar 9â„¢ is the owner of the copyright in its MLS® System. Data is deemed reliable but is not guaranteed accurate by Pillar 9â„¢. The trademarks MLS®, Multiple Listing Service® and the associated logos are owned by The Canadian Real Estate Association (CREA) and identify the quality of services provided by real estate professionals who are members of CREA. Used under license.