

\$449,800 - 909, 188 15 Avenue Sw, Calgary

MLS® #A2227910

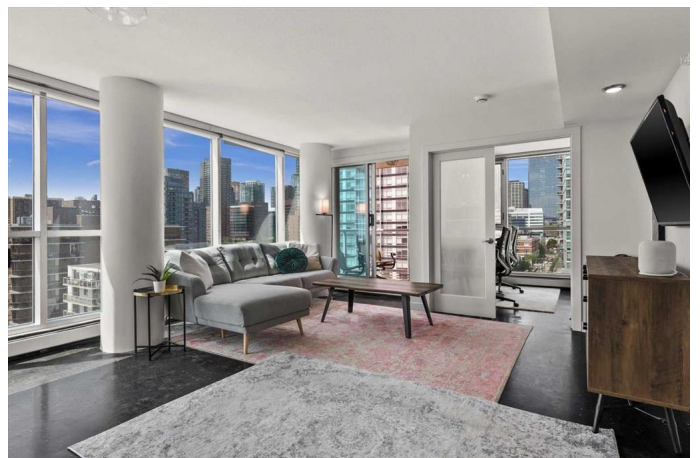
\$449,800

2 Bedroom, 1.00 Bathroom, 925 sqft

Residential on 0.00 Acres

Beltline, Calgary, Alberta

FLOOR-TO-CEILING WINDOWS | WEST FACING CORNER UNIT | DOWNTOWN VIEWS | MODERN UPGRADES| Soak in the incredible downtown views from this sleek 2-bedroom condo, where floor-to-ceiling windows bring the city skyline right into your living room. Located in The Chocolate building in the heart of Victoria Park, enjoy the ultimate urban lifestyle just off 1st Street and 17th Ave offering incredible restaurants, cocktail bars, and coffee shops, all while just a short distance from the Calgary Saddledome and Stampede Park. Designed for both comfort and style, the open-concept layout features polished concrete floors and a fully upgraded kitchen complete with quartz countertops, sleek stainless steel appliances, bright cabinetry, and a large island offering plenty of space to host and entertain. The main living area is the perfect spot to relax and enjoy the city views with floor-to-ceiling windows throughout. Wake up each morning to breathtaking views of the iconic Calgary Tower, perfectly framed from your NW facing patio, the ideal spot to enjoy your morning coffee. The second bedroom offers versatile space, perfect for a comfortable home office or guest room. The updated 4-piece bathroom features a sleek modern vanity and ample storage. Additional features include in-suite laundry, a titled underground parking stall, complimentary bike storage, and a common courtyard patio for you to enjoy during these



summer months. Whether you're a first-time buyer, urban professional, or investor, this condo delivers exceptional value and an unbeatable location! *CHECK OUT 360 VIRTUAL TOUR*

Built in 2006

Essential Information

MLS® #	A2227910
Price	\$449,800
Bedrooms	2
Bathrooms	1.00
Full Baths	1
Square Footage	925
Acres	0.00
Year Built	2006
Type	Residential
Sub-Type	Apartment
Style	Single Level Unit
Status	Active

Community Information

Address	909, 188 15 Avenue Sw
Subdivision	Beltline
City	Calgary
County	Calgary
Province	Alberta
Postal Code	T2R 1S4

Amenities

Amenities	Elevator(s), Party Room
Parking Spaces	1
Parking	Parkade, Stall, Underground

Interior

Interior Features	Breakfast Bar, High Ceilings, Kitchen Island, No Animal Home, No Smoking Home, Quartz Counters
Appliances	Central Air Conditioner, Dishwasher, Dryer, Electric Stove, Microwave,

	Range Hood, Refrigerator, Washer, Window Coverings
Heating	Baseboard, Natural Gas
Cooling	Central Air
# of Stories	20

Exterior

Exterior Features	Courtyard
Lot Description	Views
Roof	Tar/Gravel
Construction	Concrete, Metal Siding

Additional Information

Date Listed	June 5th, 2025
Days on Market	19
Zoning	CC-COR

Listing Details

Listing Office	Real Broker
----------------	-------------

Data is supplied by Pillar 9â„¢ MLS® System. Pillar 9â„¢ is the owner of the copyright in its MLS® System. Data is deemed reliable but is not guaranteed accurate by Pillar 9â„¢. The trademarks MLS®, Multiple Listing Service® and the associated logos are owned by The Canadian Real Estate Association (CREA) and identify the quality of services provided by real estate professionals who are members of CREA. Used under license.