

# \$147,000 - 233 Percy Street, Bittern Lake

MLS® #A2227424

**\$147,000**

3 Bedroom, 2.00 Bathroom, 1,184 sqft

Residential on 0.12 Acres

NONE, Bittern Lake, Alberta

Cozy 3 bedroom 2 bathroom Mobile home on its own lot has plenty of potential It features a spacious kitchen with dining area and a generous sized living room. The Primary bedroom is on one side of the mobile with 4 pce ensuite while the other two rooms are on the opposite side with a 3 pce bath with mobility shower. There is a large 10X33 Covered Deck and two car car port as well. This home is ideally located close to the popular trails in the area and perfect for the Quad, Dirt Bike and Sled lovers...

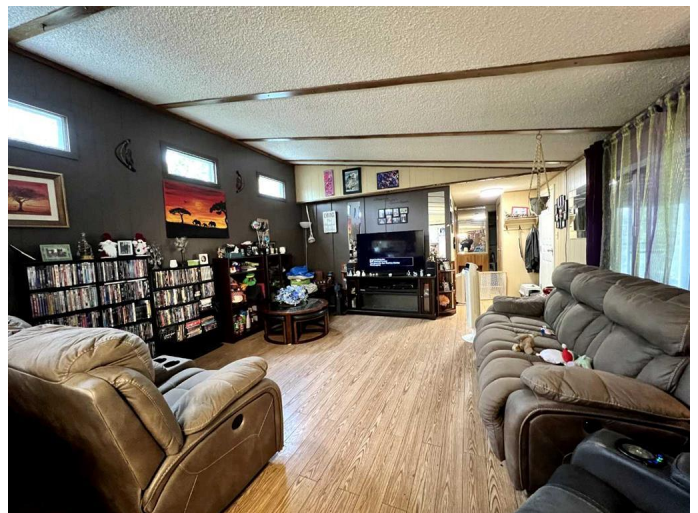
Built in 1985

## Essential Information

MLS® #	A2227424
Price	\$147,000
Bedrooms	3
Bathrooms	2.00
Full Baths	2
Square Footage	1,184
Acres	0.12
Year Built	1985
Type	Residential
Sub-Type	Detached
Style	Single Wide Mobile Home
Status	Active

## Community Information

Address 233 Percy Street



Subdivision	NONE
City	Bittern Lake
County	Camrose County
Province	Alberta
Postal Code	T0C 0L0

### Amenities

Parking Spaces	4
Parking	Attached Carport

### Interior

Interior Features	See Remarks
Appliances	Refrigerator, Stove(s), Washer/Dryer
Heating	Forced Air, Natural Gas
Cooling	None
Basement	None

### Exterior

Exterior Features	Storage
Lot Description	Back Lane, Back Yard, Few Trees
Roof	Asphalt Shingle
Construction	Wood Frame
Foundation	None

### Additional Information

Date Listed	June 2nd, 2025
Days on Market	100
Zoning	R2

### Listing Details

Listing Office	RE/MAX Real Estate (Edmonton) Ltd.
----------------	------------------------------------

Data is supplied by Pillar 9â„¢ MLS® System. Pillar 9â„¢ is the owner of the copyright in its MLS® System. Data is deemed reliable but is not guaranteed accurate by Pillar 9â„¢. The trademarks MLS®, Multiple Listing Service® and the associated logos are owned by The Canadian Real Estate Association (CREA) and identify the quality of services provided by real estate professionals who are members of CREA. Used under license.