

\$459,900 - 2110 20 Street S, Lethbridge

MLS® #A2226172

\$459,900

5 Bedroom, 2.00 Bathroom, 1,122 sqft
Residential on 0.11 Acres

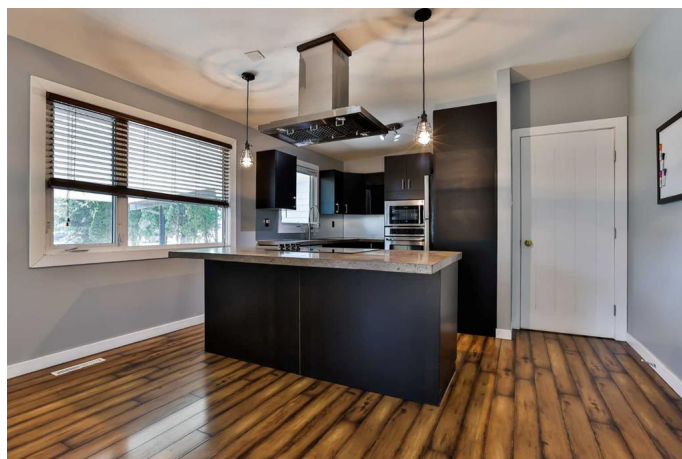
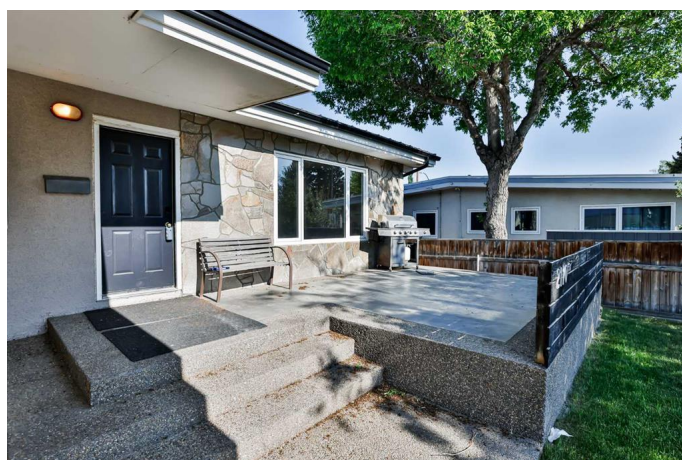
Agnes Davidson, Lethbridge, Alberta

Beautifully remodeled 3-bedroom bungalow with an (illegal) 2-bedroom basement suite, ideally located right across from Agnes Davidson Elementary and just steps from the Sugar Bowl. The main floor features a stunning updated kitchen with concrete countertops, custom cabinetry, a central island with custom range hood, and stainless-steel appliances. Vinyl plank flooring, PVC windows, a high-efficiency furnace, and a newer 24x24 double garage with built-in workbenches add to the appeal. Downstairs, youâ€™ll find a large, shared laundry area that leads into a 2-bedroom basement suite, currently rented by a young couple with a newborn. Outside, enjoy a private backyard with a custom concrete patio surrounding a fire pit and a newer back fence. The front yard offers a spacious deck and driveway, both finished with a mix of concrete textures including exposed aggregate. Extras include central air conditioning and all appliances. This is a rare opportunity in one of Lethbridgeâ€™s most sought-after neighbourhoods â€“ a must-see to truly appreciate the value and potential, Call your RealtorÂ®? today!

Built in 1969

Essential Information

MLS® #	A2226172
Price	\$459,900



Bedrooms	5
Bathrooms	2.00
Full Baths	2
Square Footage	1,122
Acres	0.11
Year Built	1969
Type	Residential
Sub-Type	Detached
Style	Bungalow
Status	Active

Community Information

Address	2110 20 Street S
Subdivision	Agnes Davidson
City	Lethbridge
County	Lethbridge
Province	Alberta
Postal Code	T1K 2G8

Amenities

Parking Spaces	6
Parking	Double Garage Detached, Carport
# of Garages	2

Interior

Interior Features	Kitchen Island, Open Floorplan, Separate Entrance, Storage, Vinyl Windows
Appliances	See Remarks
Heating	Forced Air
Cooling	Central Air
Has Basement	Yes
Basement	Exterior Entry, Finished, Full, Suite

Exterior

Exterior Features	None
Lot Description	Back Lane, Back Yard, Interior Lot, Landscaped
Roof	Metal
Construction	Stucco
Foundation	Poured Concrete

Additional Information

Date Listed	May 30th, 2025
Days on Market	8
Zoning	R-L

Listing Details

Listing Office	RE/MAX REAL ESTATE - LETHBRIDGE
----------------	---------------------------------

Data is supplied by Pillar 9â„¸ MLSÂ® System. Pillar 9â„¸ is the owner of the copyright in its MLSÂ® System. Data is deemed reliable but is not guaranteed accurate by Pillar 9â„¸. The trademarks MLSÂ®, Multiple Listing ServiceÂ® and the associated logos are owned by The Canadian Real Estate Association (CREA) and identify the quality of services provided by real estate professionals who are members of CREA. Used under license.