

# \$519,900 - 14 Schuler Place Se, Medicine Hat

MLS® #A2223332

**\$519,900**

5 Bedroom, 3.00 Bathroom, 1,371 sqft  
Residential on 0.18 Acres

SE Southridge, Medicine Hat, Alberta

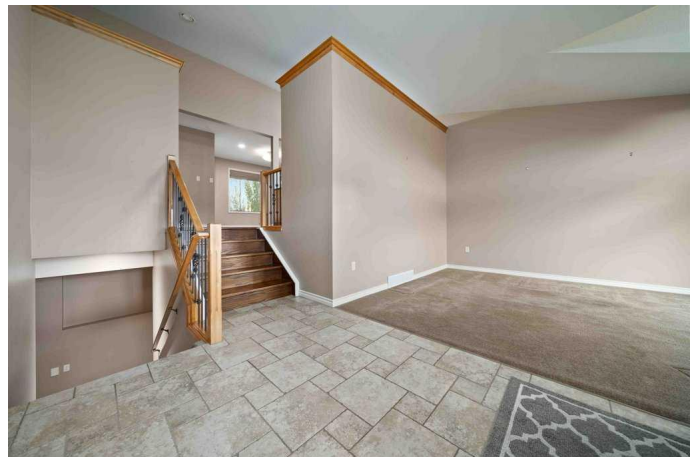
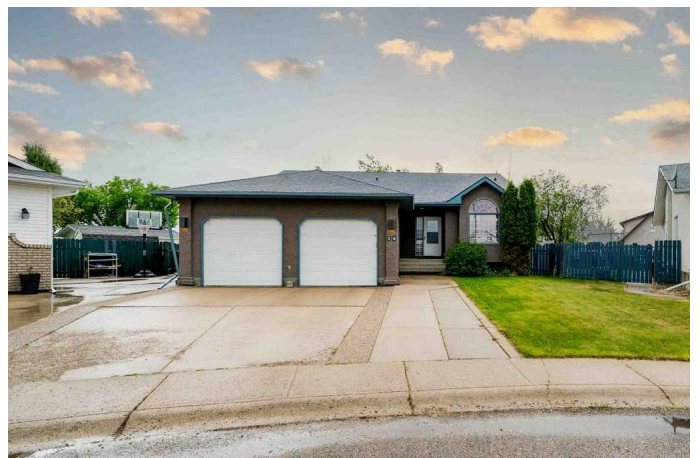
Unique Modified Bi-Level in Prime Family Location – 14 Schuler Place SE! Welcome to this exceptionally maintained modified bi-level, ideally located in a quiet court location, just steps from Roy Wilson Elementary, the YMCA, and Notre Dame Middle School. This 5-bedroom + office home offers the space, function, and extras today’s families are looking for.

Step inside to discover a gorgeous kitchen with granite countertops, a sleek new appliance package, garburator, and trash compactor – perfectly designed for modern living. The main floor also features 3 spacious bedrooms, including a primary suite with a 4-piece ensuite, double sinks, laundry chute and a walk-in closet.

The bright, fully developed lower level offers 2 additional bedrooms, a versatile office/6th bedroom, a full bathroom with laundry, and direct access to the attached garage. Large windows bring in natural light, and the gas fireplace in the family room adds a cozy touch. Outside, enjoy the huge tiered rear deck, firepit area, PVC fencing, and underground sprinklers – ideal for entertaining and family fun. Car enthusiasts or hobbyists will love the 24x26 double attached garage plus a 14x28 heated detached garage.

Additional features include central vac, ample under-stair storage, new hot water tank (2024) and is situated in a sought-after, family-friendly neighborhood

This home truly has it all – space, style, and



unbeatable convenience. Don't miss your chance to own this one-of-a-kind property!

Built in 1992

**Essential Information**

MLS® #	A2223332
Price	\$519,900
Bedrooms	5
Bathrooms	3.00
Full Baths	3
Square Footage	1,371
Acres	0.18
Year Built	1992
Type	Residential
Sub-Type	Detached
Style	Bi-Level
Status	Active

**Community Information**

Address	14 Schuler Place Se
Subdivision	SE Southridge
City	Medicine Hat
County	Medicine Hat
Province	Alberta
Postal Code	T1B 4A7

**Amenities**

Parking Spaces	6
Parking	Concrete Driveway, Double Garage Attached, Garage Door Opener, Heated Garage, Single Garage Detached
# of Garages	3

**Interior**

Interior Features	Central Vacuum, Double Vanity, Granite Counters, High Ceilings, Pantry, Walk-In Closet(s)
Appliances	Central Air Conditioner, Dishwasher, Garage Control(s), Garburator, Microwave Hood Fan, Refrigerator, Stove(s), Trash Compactor
Heating	Forced Air, Natural Gas

Cooling	Central Air
Fireplace	Yes
# of Fireplaces	1
Fireplaces	Family Room, Gas
Has Basement	Yes
Basement	Finished, Full

## Exterior

Exterior Features	Fire Pit, Private Yard, Storage
Lot Description	Back Lane, Back Yard, Landscaped, Many Trees, Pie Shaped Lot, Underground Sprinklers
Roof	Asphalt Shingle
Construction	Stucco
Foundation	Poured Concrete

## Additional Information

Date Listed	May 21st, 2025
Days on Market	12
Zoning	R-LD

## Listing Details

Listing Office	RIVER STREET REAL ESTATE
----------------	--------------------------

Data is supplied by Pillar 9â„¢ MLS® System. Pillar 9â„¢ is the owner of the copyright in its MLS® System. Data is deemed reliable but is not guaranteed accurate by Pillar 9â„¢. The trademarks MLS®, Multiple Listing Service® and the associated logos are owned by The Canadian Real Estate Association (CREA) and identify the quality of services provided by real estate professionals who are members of CREA. Used under license.