

\$655,000 - 31 Sierra Road Sw, Medicine Hat

MLS® #A2222885

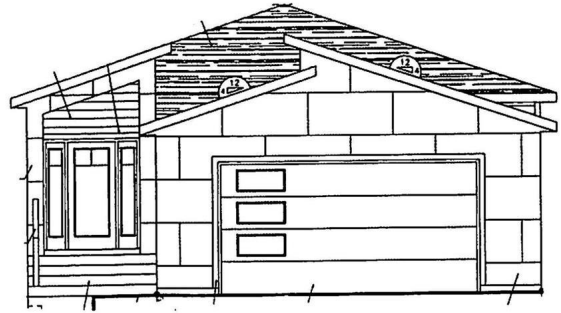
\$655,000

5 Bedroom, 3.00 Bathroom, 1,403 sqft

Residential on 0.10 Acres

SW Southridge, Medicine Hat, Alberta

This stunning new construction home offers over 1,400 sq. ft. of beautifully designed living space on the main level, with the opportunity for buyers to select their own finishes and make it truly their own. Perfectly positioned in a growing community, this home features a fully finished walk-out basement and a thoughtful, functional layout ideal for modern living. The main floor welcomes you with an open-concept design that seamlessly blends the kitchen, dining, and great room areas, creating the perfect space for everyday living and entertaining. The kitchen boasts a large central island and plenty of room for prep and storage, while the adjacent dining area leads to a 17x10 covered deck for effortless indoor-outdoor living. Two bedrooms are on the main floor, including a spacious primary suite complete with a walk-in closet and a luxurious 4-piece ensuite with dual sinks. The second bedroom can easily double as a home office or den. A full 4-piece bathroom and convenient main floor laundry add to the home's smart layout. Downstairs, the fully finished walk-out basement offers even more space with three generously sized bedrooms, another full bathroom, and a large family room with access to a covered patio and future yardâ€”ideal for guests, teens, or extended family living. The 23x23 double attached garage provides plenty of room for vehicles, storage, and hobbies. Please note: This home is currently under construction, and all measurements have been taken from builder



blueprints. Don't miss your chance to personalize this exceptional home and enjoy the best of comfort, space, and style!

Built in 2025

Essential Information

MLS® #	A2222885
Price	\$655,000
Bedrooms	5
Bathrooms	3.00
Full Baths	3
Square Footage	1,403
Acres	0.10
Year Built	2025
Type	Residential
Sub-Type	Detached
Style	Bungalow
Status	Active

Community Information

Address	31 Sierra Road Sw
Subdivision	SW Southridge
City	Medicine Hat
County	Medicine Hat
Province	Alberta
Postal Code	T1B 4Y6

Amenities

Parking Spaces	4
Parking	Double Garage Attached
# of Garages	2

Interior

Interior Features	See Remarks
Appliances	Central Air Conditioner, Dishwasher, Microwave Hood Fan, Refrigerator, Stove(s)
Heating	Forced Air, Natural Gas
Cooling	Central Air

Fireplace	Yes
# of Fireplaces	1
Fireplaces	Electric
Has Basement	Yes
Basement	Finished, Full

Exterior

Exterior Features	Other
Lot Description	Other, Rectangular Lot
Roof	Asphalt Shingle
Construction	Stone, Vinyl Siding
Foundation	Poured Concrete

Additional Information

Date Listed	May 21st, 2025
Days on Market	99
Zoning	R-LD

Listing Details

Listing Office	RE/MAX MEDALTA REAL ESTATE
----------------	----------------------------

Data is supplied by Pillar 9â„¢ MLS® System. Pillar 9â„¢ is the owner of the copyright in its MLS® System. Data is deemed reliable but is not guaranteed accurate by Pillar 9â„¢. The trademarks MLS®, Multiple Listing Service® and the associated logos are owned by The Canadian Real Estate Association (CREA) and identify the quality of services provided by real estate professionals who are members of CREA. Used under license.