

\$79,000 - Weberville Road, Rural Northern Lights, County of

MLS® #A2222692

\$79,000

0 Bedroom, 0.00 Bathroom,
Land on 7.90 Acres

NONE, Rural Northern Lights, County of,
Alberta

Nicely treed acreage approximately 12.5 miles north on Weberville Road (HWY 743) only minutes from Peace River. Property backs onto grazing lease and is partially fenced. Asking \$79,000 plus GST if applicable. Call today for further information and directions to this property.

Essential Information

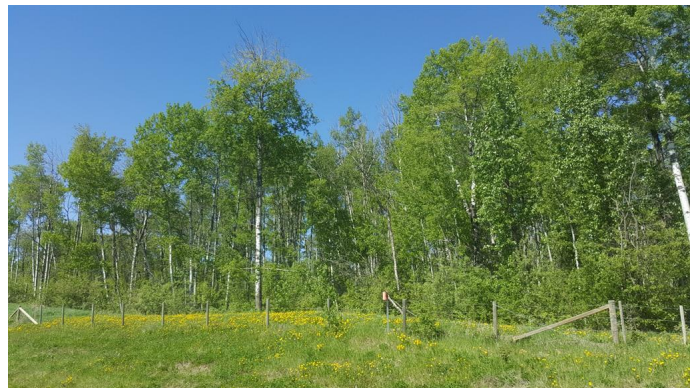
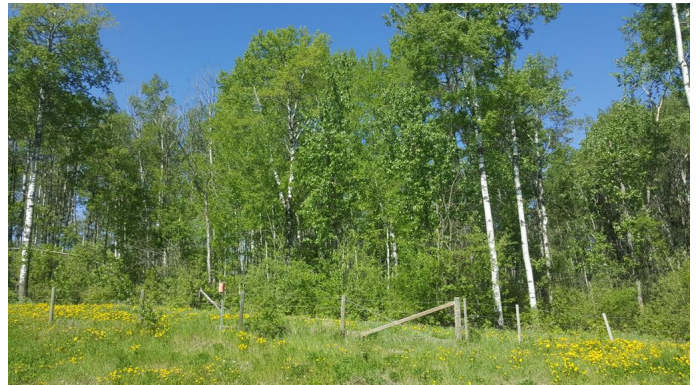
MLS® #	A2222692
Price	\$79,000
Bathrooms	0.00
Acres	7.90
Type	Land
Sub-Type	Residential Land
Status	Active

Community Information

Address Weberville Road
Subdivision	NONE
City	Rural Northern Lights, County of
County	Northern Lights, County of
Province	Alberta
Postal Code	T8S 1R7

Exterior

Lot Description	Subdivided, Treed
-----------------	-------------------



Additional Information

Date Listed	May 20th, 2025
Days on Market	88
Zoning	Residential

Listing Details

Listing Office	RE/MAX Northern Realty
----------------	------------------------

Data is supplied by Pillar 9â„¸ MLSÂ® System. Pillar 9â„¸ is the owner of the copyright in its MLSÂ® System. Data is deemed reliable but is not guaranteed accurate by Pillar 9â„¸. The trademarks MLSÂ®, Multiple Listing ServiceÂ® and the associated logos are owned by The Canadian Real Estate Association (CREA) and identify the quality of services provided by real estate professionals who are members of CREA. Used under license.