

\$157,000 - 193 Christina Lake Drive, Conklin

MLS® #A2222604

\$157,000

0 Bedroom, 0.00 Bathroom,
Land on 2.05 Acres

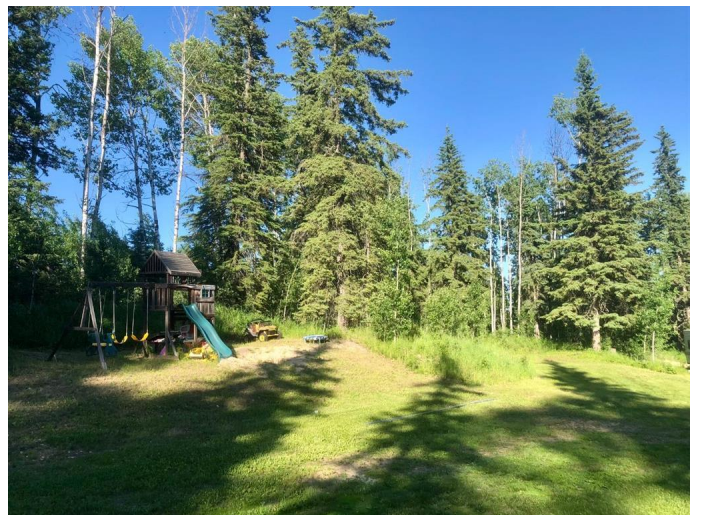
Conklin, Conklin, Alberta

Recreational Getaway in Conklin!

Escape to this beautifully developed and fully fenced property—perfect for outdoor lovers or savvy investors. Tucked away in a private, park-like setting, the cozy cabin is equipped with electric heat and a woodstove for year-round comfort. A 2,500-liter water tank adds extra convenience and independence.

With five 30-amp RV plugs, the property is ready to host friends and family or even generate income as a campground. There’s even a dedicated playground for kids, making it a true family-friendly retreat. Zoned Hamlet Residential, this versatile property offers multiple potential uses and long-term value.

Enjoy recent community improvements in Conklin, including a new recreation center, upgraded water treatment facility, and paved walking trails—all boosting quality of life and future potential. Whether you're looking for a quiet getaway or a smart investment, this recreational gem offers it all!



Essential Information

MLS® #	A2222604
Price	\$157,000
Bathrooms	0.00

Acres	2.05
Type	Land
Sub-Type	Residential Land
Status	Active

Community Information

Address	193 Christina Lake Drive
Subdivision	Conklin
City	Conklin
County	Wood Buffalo
Province	Alberta
Postal Code	T0P 1H1

Amenities

Utilities	Electricity Available, Sewer Available, Water At Lot Line
-----------	---

Additional Information

Date Listed	May 19th, 2025
Days on Market	88
Zoning	Rural ResidentialL

Listing Details

Listing Office	RE/MAX LA BICHE REALTY
----------------	------------------------

Data is supplied by Pillar 9â„¢ MLSÂ® System. Pillar 9â„¢ is the owner of the copyright in its MLSÂ® System. Data is deemed reliable but is not guaranteed accurate by Pillar 9â„¢. The trademarks MLSÂ®, Multiple Listing ServiceÂ® and the associated logos are owned by The Canadian Real Estate Association (CREA) and identify the quality of services provided by real estate professionals who are members of CREA. Used under license.