

\$700,000 - 249, 28342 Township Road 384, Rural Red Deer County

MLS® #A2222460

\$700,000

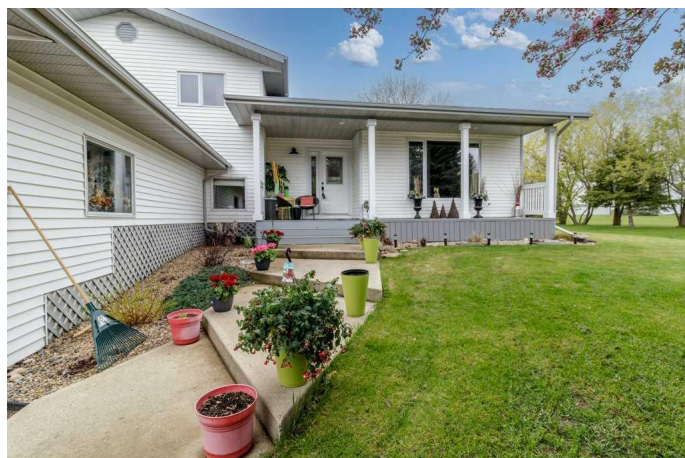
4 Bedroom, 3.00 Bathroom, 1,362 sqft
Residential on 1.55 Acres

Poplar Ridge, Rural Red Deer County, Alberta

Welcome to your perfect retreat in the highly sought-after community of Poplar Ridge! Nestled on 1.55 acres of beautifully treed land in Rural Red Deer County, this well-maintained 4-level split offers privacy, space, and stunning natural views. With 4 bedrooms and 3 bathrooms, this home is ideal for families looking for both comfort and functionality. Step inside to find a spacious kitchen with newer quartz countertops and a stylish backsplash (updated approx. 3 years ago), complemented by beautiful hardwood flooring and newer carpet throughout. The layout offers multiple living areas, perfect for entertaining or relaxing with family. Enjoy the peace and tranquility of the expansive yard, surrounded by mature trees and lush green space—ideal for outdoor living and recreation. The attached garage and long driveway provide ample parking for guests and toys alike. Located just minutes from a local school and offering the best of country living with easy access to amenities, this property is a rare find in Poplar Ridge. Don't miss your chance to own this private, picturesque acreage, located between Red Deer and Sylvan Lake.

Built in 1987

Essential Information



MLS® #	A2222460
Price	\$700,000
Bedrooms	4
Bathrooms	3.00
Full Baths	3
Square Footage	1,362
Acres	1.55
Year Built	1987
Type	Residential
Sub-Type	Detached
Style	4 Level Split, Acreage with Residence
Status	Active

Community Information

Address	249, 28342 Township Road 384
Subdivision	Poplar Ridge
City	Rural Red Deer County
County	Red Deer County
Province	Alberta
Postal Code	T4S 2B6

Amenities

Parking	Double Garage Attached
# of Garages	2

Interior

Interior Features	Open Floorplan
Appliances	See Remarks
Heating	Forced Air
Cooling	None
Fireplace	Yes
# of Fireplaces	1
Fireplaces	Gas
Has Basement	Yes
Basement	Finished, Full

Exterior

Exterior Features	Private Yard
Lot Description	Private

Roof	Asphalt Shingle
Construction	Vinyl Siding
Foundation	Poured Concrete

Additional Information

Date Listed	May 18th, 2025
Days on Market	6
Zoning	R-1

Listing Details

Listing Office	Royal LePage Network Realty Corp.
----------------	-----------------------------------

Data is supplied by Pillar 9â„¢ MLSÂ® System. Pillar 9â„¢ is the owner of the copyright in its MLSÂ® System. Data is deemed reliable but is not guaranteed accurate by Pillar 9â„¢. The trademarks MLSÂ®, Multiple Listing ServiceÂ® and the associated logos are owned by The Canadian Real Estate Association (CREA) and identify the quality of services provided by real estate professionals who are members of CREA. Used under license.