

\$439,000 - 130080 Hwy 43, Demmitt

MLS® #A2220698

\$439,000

2 Bedroom, 1.00 Bathroom, 1,375 sqft

Residential on 159.00 Acres

NONE, Demmitt, Alberta

Welcome to your dream country escape! Nestled in the peaceful and picturesque Demmitt area, this expansive 159-acre property offers the perfect blend of rural charm and practical features for hobby farmers, outdoor enthusiasts, and anyone seeking privacy with potential.

The property includes a separately titled 10-acre parcel featuring a cozy 1,375 sq. ft. bungalow, all on one level, with 2 bedrooms and 1 bathroom. This older country home offers a solid base for renovation or could serve as a charming guest residence or rental unit.

Key features include:

30' x 48' insulated shop, ideal for storage, mechanical work, or a home-based business
Numerous outbuildings for livestock, storage, or hobby use

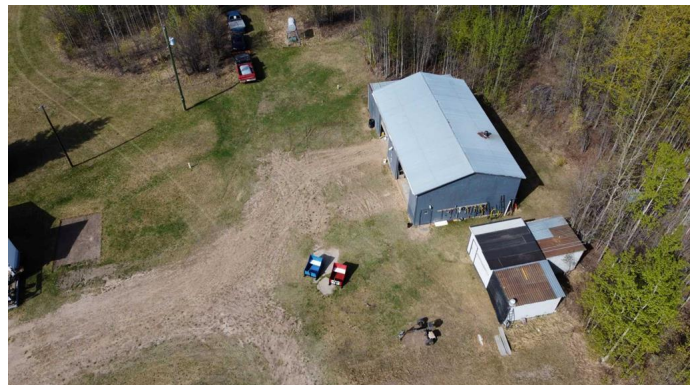
Approx. 20 acres of productive hay land

Annual surface lease revenue of \$3,650

Proximity to crown land, offering exceptional hunting opportunities and outdoor recreation

Quiet and private rural location, yet conveniently located just 15 minutes to Hythe, AB, 56 minutes to Grande Prairie, and 36 minutes to Dawson Creek, BC

Whether you're looking to start a small farm, enjoy hunting and recreation on your own land, or simply settle into a peaceful country lifestyle with additional income potential, this property is a rare find with incredible value. Don't miss this opportunity to own a versatile country acreage with so much to offer. Contact



us today to schedule your private viewing!

Built in 1936

Essential Information

MLS® #	A2220698
Price	\$439,000
Bedrooms	2
Bathrooms	1.00
Full Baths	1
Square Footage	1,375
Acres	159.00
Year Built	1936
Type	Residential
Sub-Type	Detached
Style	Acreage with Residence, Bungalow
Status	Active

Community Information

Address	130080 Hwy 43
Subdivision	NONE
City	Demmitt
County	Grande Prairie No. 1, County of
Province	Alberta
Postal Code	T0H 1C0

Amenities

Parking Spaces	100
Parking	Triple Garage Detached
# of Garages	3

Interior

Interior Features	See Remarks
Appliances	Dryer, Electric Stove, Refrigerator, Washer
Heating	Fireplace(s), Forced Air, Propane, Wood Stove
Cooling	None
Fireplace	Yes
# of Fireplaces	2

Fireplaces	Wood Burning, Wood Burning Stove
Basement	None

Exterior

Exterior Features	None
Lot Description	Farm
Roof	Asphalt Shingle
Construction	Mixed
Foundation	Poured Concrete

Additional Information

Date Listed	May 13th, 2025
Days on Market	2
Zoning	Ag

Listing Details

Listing Office	RE/MAX Grande Prairie
----------------	-----------------------

Data is supplied by Pillar 9â„¢ MLSÂ® System. Pillar 9â„¢ is the owner of the copyright in its MLSÂ® System. Data is deemed reliable but is not guaranteed accurate by Pillar 9â„¢. The trademarks MLSÂ®, Multiple Listing ServiceÂ® and the associated logos are owned by The Canadian Real Estate Association (CREA) and identify the quality of services provided by real estate professionals who are members of CREA. Used under license.