

\$189,000 - #207, 4210 20 Avenue S, Lethbridge

MLS® #A2220407

\$189,000

2 Bedroom, 1.00 Bathroom, 873 sqft

Residential on 0.00 Acres

Redwood, Lethbridge, Alberta

Charming 2-Bedroom Condo in the Heart of Lethbridge's Southside "All Utilities Included!

Welcome to this well-maintained 2-bedroom, 1-bath condo located in the heart of Southside Lethbridge "a perfect combination of comfort, convenience, and value.

Step into a cozy living room that makes the most of the space, and enjoy a surprisingly spacious bathroom that adds to the comfort of daily living. This unit also features the convenience of in-suite laundry, so no need to share facilities or leave your home for washing.

Perfect for first-time buyers, students, downsizers, or investors, this unit offers a carefree lifestyle with a condo fee that covers all utilities "including electricity, gas, water, and sewer.

Located just minutes from shopping, schools, transit, parks, and all the key amenities the Southside has to offer, this is a rare find in a highly desirable area.

Don't miss your chance to own this affordable and move-in ready condo!

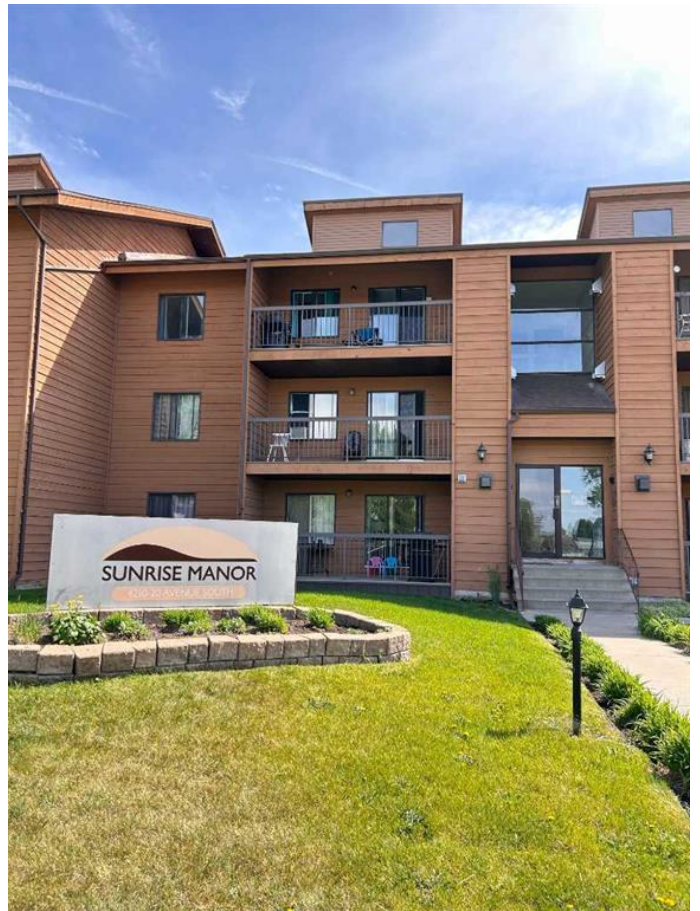
Built in 1978

Essential Information

MLS® # A2220407

Price \$189,000

Bedrooms 2



Bathrooms	1.00
Full Baths	1
Square Footage	873
Acres	0.00
Year Built	1978
Type	Residential
Sub-Type	Apartment
Style	Single Level Unit
Status	Active

Community Information

Address	#207, 4210 20 Avenue S
Subdivision	Redwood
City	Lethbridge
County	Lethbridge
Province	Alberta
Postal Code	T1K4X9

Amenities

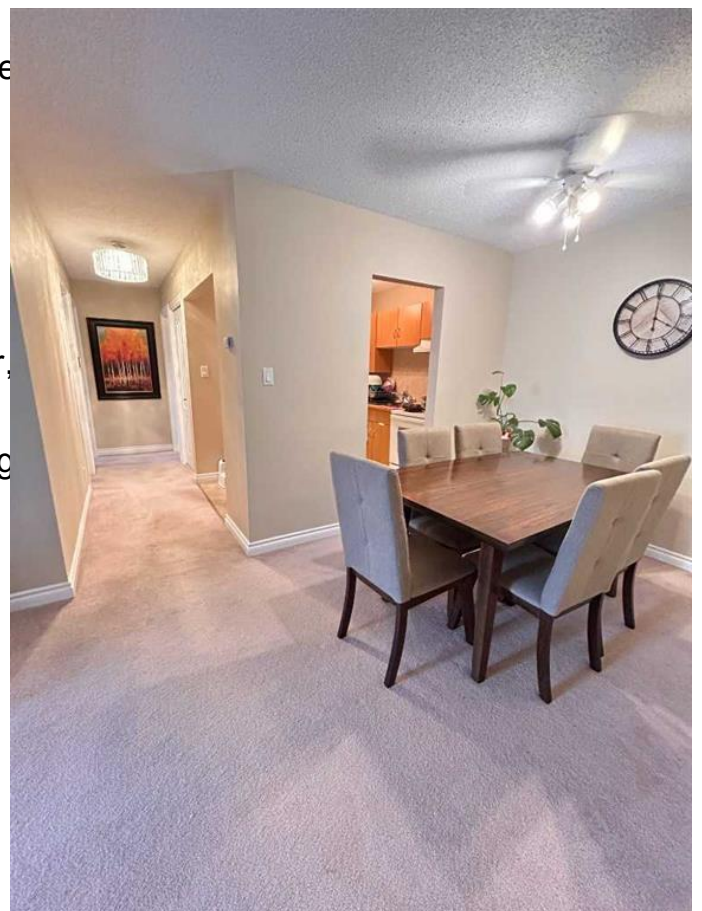
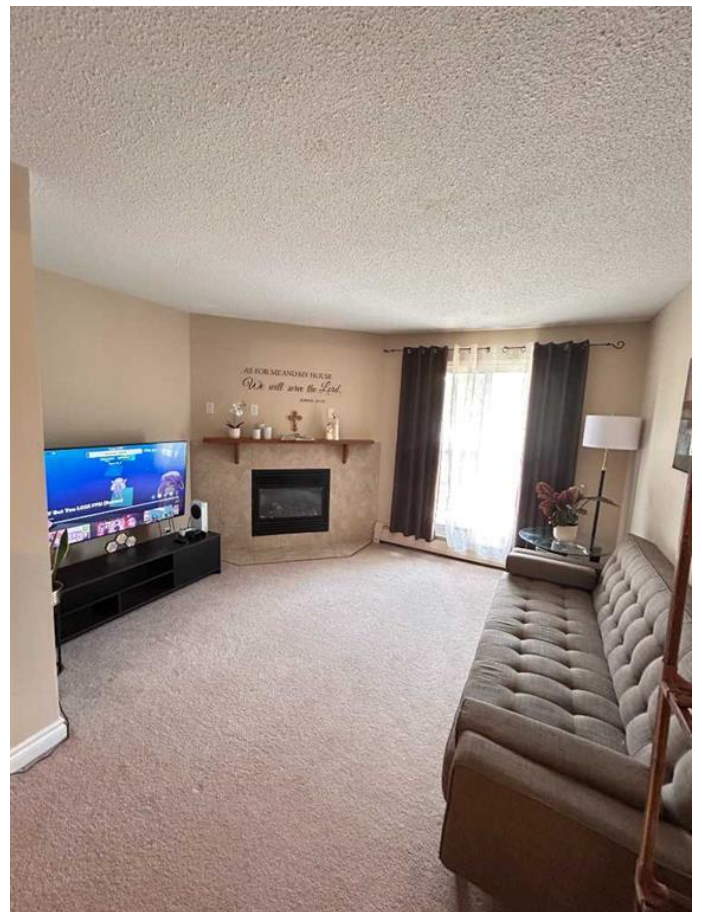
Amenities	Coin Laundry, Fitness Center, Storage, Trash
Parking Spaces	1
Parking	Stall

Interior

Interior Features	Ceiling Fan(s), Chandelier, Storage
Appliances	Dishwasher, Electric Range, Stacked
Heating	Boiler
Cooling	None
Fireplace	Yes
# of Fireplaces	1
Fireplaces	Gas
# of Stories	3

Exterior

Exterior Features	Balcony
Roof	Asphalt Shingle



Construction Cedar

Additional Information

Date Listed May 11th, 2025
Days on Market 2
Zoning R-60

Listing Details

Listing Office Initia Real Estate

Data is supplied by Pillar 9â„¢ MLS® System. Pillar 9â„¢ is the owner of the copyright in its MLS® System. Data is deemed reliable but is not guaranteed accurate by Pillar 9â„¢. The trademarks MLS®, Multiple Listing Service® and the associated logos are owned by The Canadian Real Estate Association (CREA) and identify the quality of services provided by real estate professionals who are members of CREA. Used under license.