

\$799,900 - 835 Lakewood Circle, Strathmore

MLS® #A2218064

\$799,900

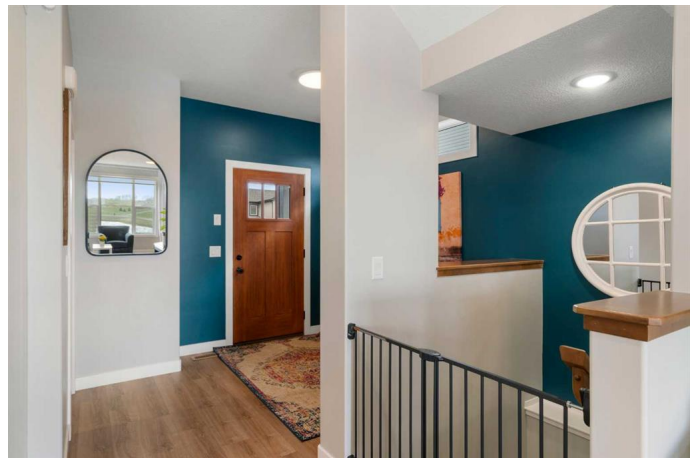
3 Bedroom, 3.00 Bathroom, 2,271 sqft

Residential on 0.12 Acres

Lakewood Meadows, Strathmore, Alberta

Beautiful Two-Story custom built, walkout backing onto the pond – luxury living with scenic views

Welcome to this exceptional home, perfectly situated on a landscaped lot backing onto a tranquil pond. The main floor is bright and open, designed to impress with large windows that frame the serene backyard views. The gourmet kitchen is a chef's dream, featuring an extended island with seating, quartz countertops, stainless steel appliances, a gas stove, and wrap-around cabinetry offering generous storage. Walk out on to the raised deck with plenty of space for evenings on a lounge chair and family BBQ's. A spacious walk-in pantry with a custom shelf -perfect for your coffee station and microwave-adds a touch of everyday convenience. The open-concept living and dining areas flow seamlessly, highlighted by a stunning gas fireplace—perfect for cozy evenings at home. This floor is completed by home office and half bath. You will also enjoy the oversized double garage!! Upstairs, you'll find three spacious bedrooms, a conveniently located laundry room that is attached to the primary walk in closet and a large bonus room ideal for a family lounge, playroom, or home office. The elegant primary suite offers a true retreat with a luxurious 5-piece ensuite that includes dual sinks, a glass shower, and a deep soaker tub. Plus a good sized walk in closet. The walkout basement leads to a backyard oasis, providing



direct access to walking paths and peaceful water views. With thoughtful design, upscale finishes, and a premium location, this home delivers comfort, style, and unbeatable lifestyle value.

Built in 2023

Essential Information

MLS® #	A2218064
Price	\$799,900
Bedrooms	3
Bathrooms	3.00
Full Baths	2
Half Baths	1
Square Footage	2,271
Acres	0.12
Year Built	2023
Type	Residential
Sub-Type	Detached
Style	2 Storey
Status	Active

Community Information

Address	835 Lakewood Circle
Subdivision	Lakewood Meadows
City	Strathmore
County	Wheatland County
Province	Alberta
Postal Code	T1P 0G7

Amenities

Parking Spaces	4
Parking	Double Garage Attached, Garage Door Opener, Oversized, Insulated
# of Garages	2
Waterfront	Pond

Interior

Interior Features	Built-in Features, Closet Organizers, Double Vanity, Kitchen Island,
-------------------	--

	Pantry, Quartz Counters, Recessed Lighting, Separate Entrance, Soaking Tub, Storage, Walk-In Closet(s)
Appliances	Dishwasher, Dryer, Garage Control(s), Microwave, Range Hood, Refrigerator, Washer, Window Coverings, Bar Fridge, Freezer, Gas Range
Heating	Forced Air, Natural Gas
Cooling	None
Fireplace	Yes
# of Fireplaces	1
Fireplaces	Gas, Living Room
Has Basement	Yes
Basement	Exterior Entry, Full, Unfinished, Walk-Out

Exterior

Exterior Features	Balcony, Private Yard, Private Entrance
Lot Description	Back Yard, Backs on to Park/Green Space, Landscaped, Lawn, No Neighbours Behind, Creek/River/Stream/Pond, Private
Roof	Asphalt Shingle
Construction	Vinyl Siding, Wood Frame
Foundation	Poured Concrete

Additional Information

Date Listed	May 9th, 2025
Days on Market	50
Zoning	R1N

Listing Details

Listing Office	Royal LePage Benchmark
----------------	------------------------

Data is supplied by Pillar 9â„¢ MLS® System. Pillar 9â„¢ is the owner of the copyright in its MLS® System. Data is deemed reliable but is not guaranteed accurate by Pillar 9â„¢. The trademarks MLS®, Multiple Listing Service® and the associated logos are owned by The Canadian Real Estate Association (CREA) and identify the quality of services provided by real estate professionals who are members of CREA. Used under license.