

# \$59,900 - 107, 11114 Hoppe Avenue, Grande Cache

MLS® #A2217446

**\$59,900**

2 Bedroom, 1.00 Bathroom, 798 sqft

Residential on 0.00 Acres

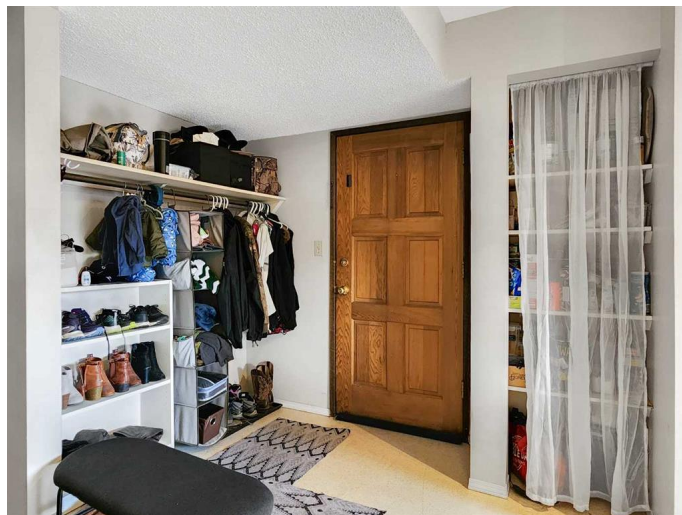
NONE, Grande Cache, Alberta

If you're seeking a low-maintenance and cost-effective lifestyle, look no further than Unit 107 in the Le Edene apartments. This two-bedroom, one-bathroom unit provides a simple yet comfortable living experience. This unit has seen a few upgrades throughout the years and so has the building. With gas and water included in your condo fee, you only need to worry about electricity. Plus, your condo fee covers snow removal and lawn maintenance, freeing up your time to enjoy beautiful Grande Cache and the outdoors. This property is ideal for those seeking affordable living, those tired of renting, bachelors/bachelorettes, or couples. Don't miss the chance to see this property in person!

Built in 1981

## Essential Information

MLS® #	A2217446
Price	\$59,900
Bedrooms	2
Bathrooms	1.00
Full Baths	1
Square Footage	798
Acres	0.00
Year Built	1981
Type	Residential
Sub-Type	Apartment
Style	Multi Level Unit



Status	Active
--------	--------

### Community Information

Address	107, 11114 Hoppe Avenue
Subdivision	NONE
City	Grande Cache
County	Greenview No. 16, M.D. of
Province	Alberta
Postal Code	T0E0Y0

### Amenities

Amenities	None
Parking Spaces	1
Parking	Off Street

### Interior

Interior Features	See Remarks
Appliances	Electric Range, Refrigerator
Heating	Baseboard, Hot Water
Cooling	None
# of Stories	2

### Exterior

Exterior Features	None
Construction	Brick, Concrete, Wood Frame

### Additional Information

Date Listed	May 3rd, 2025
Days on Market	6
Zoning	R3

### Listing Details

Listing Office	RE/MAX Grande Prairie
----------------	-----------------------

Data is supplied by Pillar 9â„¢ MLS® System. Pillar 9â„¢ is the owner of the copyright in its MLS® System. Data is deemed reliable but is not guaranteed accurate by Pillar 9â„¢. The trademarks MLS®, Multiple Listing Service® and the associated logos are owned by The Canadian Real Estate Association (CREA) and identify the quality of services provided by real estate professionals who are members of CREA. Used under license.