

# \$399,900 - 2109 Eagle's Landing Drive, Wabasca

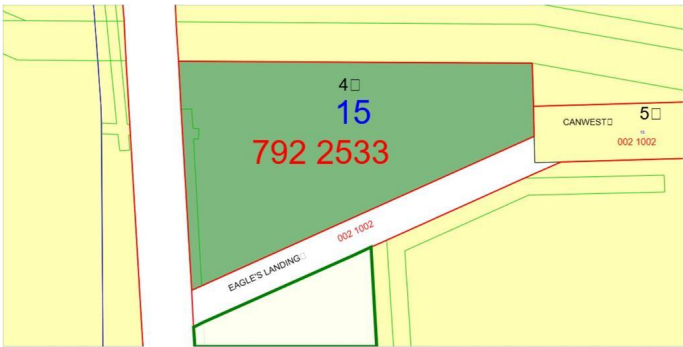
MLS® #A2216684

**\$399,900**

0 Bedroom, 0.00 Bathroom,  
Commercial on 0.00 Acres

NONE, Wabasca, Alberta

4.52 Acres of industrial land in prime location  
in Wabasca. Close to ammenities. Land will be  
cleared of all buildings. Price to sell.



## Essential Information

MLS® #	A2216684
Price	\$399,900
Bathrooms	0.00
Acres	0.00
Type	Commercial
Sub-Type	Industrial
Status	Active

## Community Information

Address	2109 Eagle's Landing Drive
Subdivision	NONE
City	Wabasca
County	Opportunity No. 17, M.D. of
Province	Alberta
Postal Code	T0G 2K0

## Additional Information

Date Listed	May 1st, 2025
Days on Market	131
Zoning	Commercial

## Listing Details

Listing Office	ROYAL LEPAGE PROGRESSIVE REALTY
----------------	---------------------------------

Data is supplied by Pillar 9â„¢ MLSÂ® System. Pillar 9â„¢ is the owner of the copyright in its MLSÂ® System. Data is

deemed reliable but is not guaranteed accurate by Pillar 9â„¸. The trademarks MLS®®, Multiple Listing Service® and the associated logos are owned by The Canadian Real Estate Association (CREA) and identify the quality of services provided by real estate professionals who are members of CREA. Used under license.