

# \$419,900 - 21 Portway Close, Blackfalds

MLS® #A2216040

## \$419,900

5 Bedroom, 3.00 Bathroom, 1,282 sqft  
Residential on 0.09 Acres

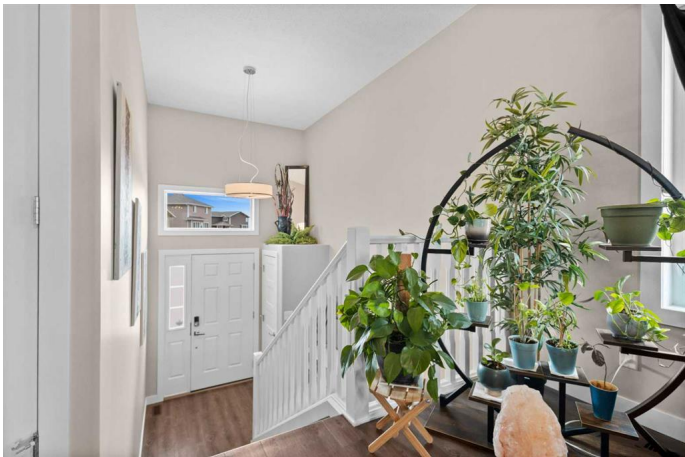
Pinnacle, Blackfalds, Alberta

Welcome to this beautifully maintained 5 bedroom, 3 bathroom home, perfectly situated on a quiet close in the heart of Blackfalds. Designed for comfort and functionality, this property features a fully developed walk-out basement and an inviting backyard complete with a fire pit—ideal for entertaining family and friends. The main level boasts an open-concept layout with a modern kitchen featuring stainless steel appliances, a convenient corner pantry, and central air conditioning for year-round comfort. The primary suite offers a walk-in closet and a private ensuite. Additional highlights include roughed-in in-floor heating, a large laundry room, ample storage space, and rear parking. This home is located just minutes from all the amenities Blackfalds has to offer, including schools, parks, shopping, and more.

Built in 2015

### Essential Information

MLS® #	A2216040
Price	\$419,900
Bedrooms	5
Bathrooms	3.00
Full Baths	3
Square Footage	1,282
Acres	0.09
Year Built	2015



Type	Residential
Sub-Type	Detached
Style	Bi-Level
Status	Active

### Community Information

Address	21 Portway Close
Subdivision	Pinnacle
City	Blackfalds
County	Lacombe County
Province	Alberta
Postal Code	T4M 0G8

### Amenities

Parking Spaces	2
Parking	Alley Access, Parking Pad, Rear Drive

### Interior

Interior Features	Breakfast Bar, Laminate Counters, Separate Entrance, Walk-In Closet(s), Wet Bar
Appliances	Central Air Conditioner, Dishwasher, Dryer, Microwave, Refrigerator, Stove(s), Washer
Heating	In Floor Roughed-In, Forced Air, Natural Gas
Cooling	Central Air
Has Basement	Yes
Basement	Exterior Entry, Finished, Full, Walk-Out

### Exterior

Exterior Features	None
Lot Description	Back Lane, Landscaped
Roof	Asphalt Shingle
Construction	Vinyl Siding, Wood Frame
Foundation	Poured Concrete

### Additional Information

Date Listed	May 1st, 2025
Days on Market	1
Zoning	R1S

### Listing Details

Data is supplied by Pillar 9â„¢ MLSÂ® System. Pillar 9â„¢ is the owner of the copyright in its MLSÂ® System. Data is deemed reliable but is not guaranteed accurate by Pillar 9â„¢. The trademarks MLSÂ®, Multiple Listing ServiceÂ® and the associated logos are owned by The Canadian Real Estate Association (CREA) and identify the quality of services provided by real estate professionals who are members of CREA. Used under license.