

\$329,900 - 50, 1313 30 Street N, Lethbridge

MLS® #A2215529

\$329,900

0 Bedroom, 0.00 Bathroom,
Commercial on 0.00 Acres

Churchill Industrial Park, Lethbridge, Alberta

Possibilities are endless! Mixed use 8-bay condo project. Steel frame construction. Ability to add 400 sq ft+- mezzanine if you need more space. High ceilings, and 12x14 OH door with opener. 2 pc bathroom. Hot and cold water taps. Excellent street visibility. Assigned secure yard storage of 23'x40' +- included.

Built in 2023

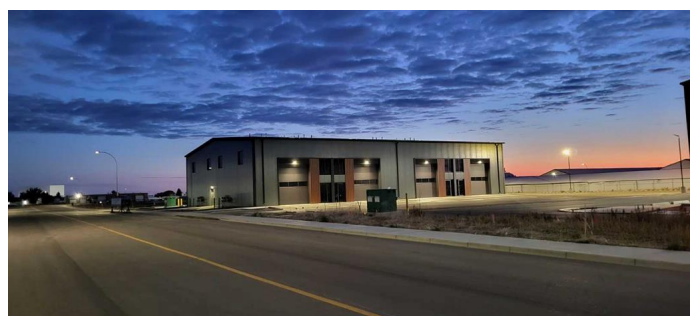
Essential Information

MLS® #	A2215529
Price	\$329,900
Bathrooms	0.00
Acres	0.00
Year Built	2023
Type	Commercial
Sub-Type	Mixed Use
Status	Active

Community Information

Address	50, 1313 30 Street N
Subdivision	Churchill Industrial Park
City	Lethbridge
County	Lethbridge
Province	Alberta
Postal Code	T1H 5K9

Exterior



Foundation Poured Concrete

Additional Information

Date Listed April 28th, 2025
Days on Market 56
Zoning DC

Listing Details

Listing Office Grassroots Realty Group

Data is supplied by Pillar 9â„¢ MLS® System. Pillar 9â„¢ is the owner of the copyright in its MLS® System. Data is deemed reliable but is not guaranteed accurate by Pillar 9â„¢. The trademarks MLS®, Multiple Listing Service® and the associated logos are owned by The Canadian Real Estate Association (CREA) and identify the quality of services provided by real estate professionals who are members of CREA. Used under license.