

\$514,900 - 201 4 Street Nw, Medicine Hat

MLS® #A2215303

\$514,900

0 Bedroom, 0.00 Bathroom, 2,110 sqft

Multi-Family on 0.00 Acres

Riverside, Medicine Hat, Alberta

Great revenue triplex which is always fully rented out. Unit 1 and 2 are 2 bedroom units with 2 bathrooms. Unit 3 has 3 bedrooms and 2 bathrooms. Each unit has its own washer and dryer and all three units have new vinyl plank flooring. There are four parking spots on the property and there is street parking as well. All three units have central air. The shingles are currently being replaced. Rents are unit 1-\$1200, unit 2-\$1250, unit 3-\$1250. This property has been very well maintained and is an excellent investment.

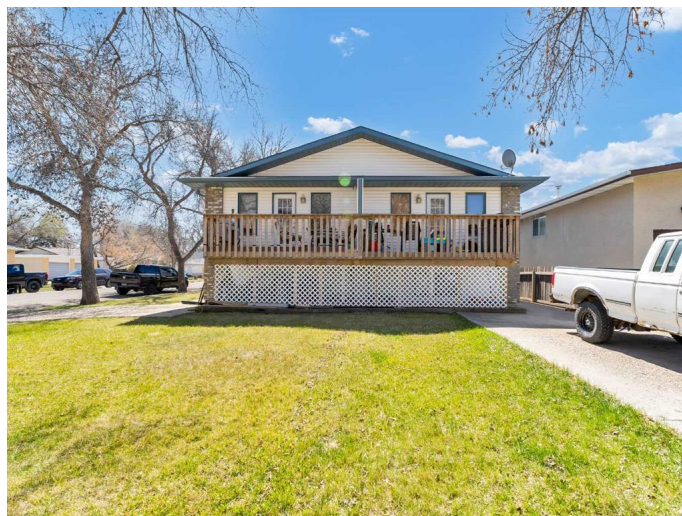
Built in 1995

Essential Information

| | |
|----------------|--------------|
| MLS® # | A2215303 |
| Price | \$514,900 |
| Bathrooms | 0.00 |
| Square Footage | 2,110 |
| Acres | 0.00 |
| Year Built | 1995 |
| Type | Multi-Family |
| Sub-Type | Triplex |
| Status | Active |

Community Information

| | |
|-------------|-----------------|
| Address | 201 4 Street Nw |
| Subdivision | Riverside |
| City | Medicine Hat |
| County | Medicine Hat |



| | |
|-------------|---------|
| Province | Alberta |
| Postal Code | T1A 6M5 |

Amenities

| | |
|----------------|---|
| Parking Spaces | 6 |
|----------------|---|

Additional Information

| | |
|----------------|------------------|
| Date Listed | April 27th, 2025 |
| Days on Market | 2 |
| Zoning | R LD |

Listing Details

| | |
|----------------|-------------------------------|
| Listing Office | ROYAL LEPAGE COMMUNITY REALTY |
|----------------|-------------------------------|

Data is supplied by Pillar 9â„¢ MLS® System. Pillar 9â„¢ is the owner of the copyright in its MLS® System. Data is deemed reliable but is not guaranteed accurate by Pillar 9â„¢. The trademarks MLS®, Multiple Listing Service® and the associated logos are owned by The Canadian Real Estate Association (CREA) and identify the quality of services provided by real estate professionals who are members of CREA. Used under license.