

\$135,000 - 215, 13348 672a Township, Lac La Biche

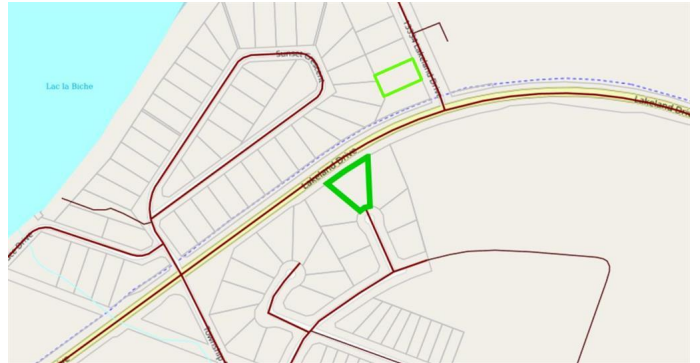
MLS® #A2215088

\$135,000

0 Bedroom, 0.00 Bathroom,
Land on 0.50 Acres

Lac La Biche, Lac La Biche, Alberta

NOW SELLING!!!! Phase 1 of Churchill Gates.
1/2 acre and 1/4 acre serviced estate lots
located only minutes from the town of Lac La
Biche, across from Lac La Biche golf and
country club. This architecturally controlled
residential subdivision has a scenic view of the
lake and is close to walking trails, boat launch,
golfing and all the recreation that Lac La Biche
has to offer.



Essential Information

| | |
|-----------|------------------|
| MLS® # | A2215088 |
| Price | \$135,000 |
| Bathrooms | 0.00 |
| Acres | 0.50 |
| Type | Land |
| Sub-Type | Residential Land |
| Status | Active |

Community Information

| | |
|-------------|--------------------------|
| Address | 215, 13348 672a Township |
| Subdivision | Lac La Biche |
| City | Lac La Biche |
| County | Lac La Biche County |
| Province | Alberta |
| Postal Code | T0A 2C0 |

Amenities

| | |
|-----------|--|
| Utilities | Electricity at Lot Line, Natural Gas at Lot Line |
|-----------|--|

Additional Information

| | |
|----------------|------------------|
| Date Listed | April 24th, 2025 |
| Days on Market | 106 |
| Zoning | Res |

Listing Details

| | |
|----------------|------------------------|
| Listing Office | COLDWELL BANKER UNITED |
|----------------|------------------------|

Data is supplied by Pillar 9â„¢ MLS® System. Pillar 9â„¢ is the owner of the copyright in its MLS® System. Data is deemed reliable but is not guaranteed accurate by Pillar 9â„¢. The trademarks MLS®, Multiple Listing Service® and the associated logos are owned by The Canadian Real Estate Association (CREA) and identify the quality of services provided by real estate professionals who are members of CREA. Used under license.