

# \$898,888 - 246 Walcrest View Se, Calgary

MLS® #A2213950

**\$898,888**

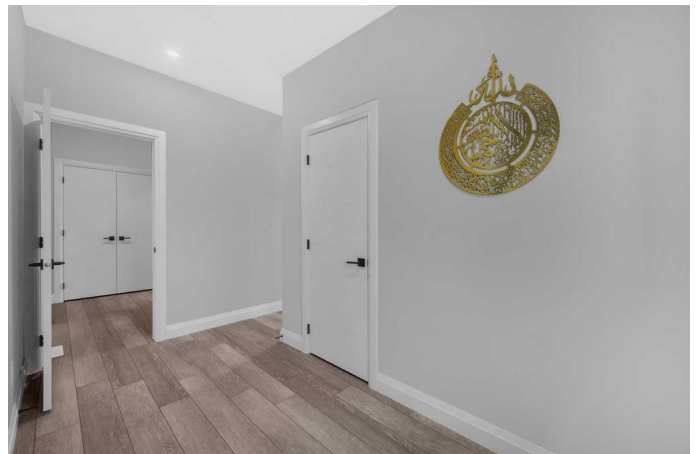
4 Bedroom, 5.00 Bathroom, 2,251 sqft

Residential on 0.09 Acres

Walden, Calgary, Alberta

Welcome to 246 Walcrest View SE, a stunning, well-designed home offering 2,251 sq. ft. of above-grade living space and an unfinished walkout basement. With 4 total bedrooms and 4.5 bathrooms, this home provides ample space for families and guests. Welcome to the main floor that features an open-concept layout with an inviting living room complemented by a cozy fireplace; a bright dining area with natural views is perfect for your family gatherings or entertaining guests. A modern kitchen with quartz countertops, a gas stove, stainless steel appliances, and plenty of cabinetry is suitable for food lovers and cooking enthusiasts. The main floor bedroom & a 3 piece modern bath is Ideal for guests or office space. There is an additional half bathroom on this level for convenience.

The bright staircase welcomes you to the spacious family room great for relaxation, family entertainment and movie nights! The 3 bedrooms including dual primary bedrooms with spacious walk-in closets are practical for large families. One of the primary bedrooms with large windows with natural views, a 5-piece modern bath oasis ensuite and spacious walk-in closet is sure to impress the new owners. The second primary bedroom with large windows and a 4-piece ensuite is practical for large families. The third bedroom and a shared bathroom complete this level and not to miss a convenient upper floor



laundry room. An unfinished walkout basement with additional separate exterior entry is waiting for your ideas.

Nestled in the vibrant community of Walden, this home offers effortless living with urban conveniences and natural beauty. Enjoy tranquil parks, preserved trees, and scenic walking trails..A naturalized wetland and clear-water pond provide a peaceful retreat.The Gates of Walden shopping district features over 65 retail shops, restaurants, and essential services. Schools Nearby: Access to Dr. Freda Miller School, Midsun Junior High, and Dr. E.P. Scarlett Senior High. Convenient access to Macleod Trail and Calgary Transit routes.

This exceptional home provides modern comfort, versatility, and an ideal location for families. Whether you want a multi-generational living space or a smart investment opportunity, this home checks all the boxes.

Built in 2023

**Essential Information**

MLS® #	A2213950
Price	\$898,888
Bedrooms	4
Bathrooms	5.00
Full Baths	4
Half Baths	1
Square Footage	2,251
Acres	0.09
Year Built	2023
Type	Residential
Sub-Type	Detached
Style	2 Storey
Status	Active

**Community Information**

Address	246 Walcrest View Se
Subdivision	Walden
City	Calgary
County	Calgary
Province	Alberta
Postal Code	T2X 4M1

### **Amenities**

Amenities	None
Parking Spaces	4
Parking	Double Garage Attached
# of Garages	2

### **Interior**

Interior Features	High Ceilings, Kitchen Island, No Animal Home, No Smoking Home, Open Floorplan, Separate Entrance, Walk-In Closet(s)
Appliances	Dishwasher, Dryer, Gas Range, Range Hood, Refrigerator, Washer, Window Coverings
Heating	Forced Air, Natural Gas
Cooling	None
Fireplace	Yes
# of Fireplaces	1
Fireplaces	Gas
Has Basement	Yes
Basement	Full, Unfinished

### **Exterior**

Exterior Features	Balcony, Private Yard
Lot Description	Back Yard, Backs on to Park/Green Space, City Lot, Views
Roof	Asphalt Shingle
Construction	Concrete, Wood Frame
Foundation	Poured Concrete

### **Additional Information**

Date Listed	April 24th, 2025
Days on Market	13
Zoning	R-G

### **Listing Details**

Listing Office

eXp Realty

Data is supplied by Pillar 9â„¢ MLSÂ® System. Pillar 9â„¢ is the owner of the copyright in its MLSÂ® System. Data is deemed reliable but is not guaranteed accurate by Pillar 9â„¢. The trademarks MLSÂ®, Multiple Listing ServiceÂ® and the associated logos are owned by The Canadian Real Estate Association (CREA) and identify the quality of services provided by real estate professionals who are members of CREA. Used under license.