

\$989,900 - 1120 Highway 11a, Sylvan Lake

MLS® #A2212958

\$989,900

0 Bedroom, 0.00 Bathroom,
Land on 87.64 Acres

NONE, Sylvan Lake, Alberta

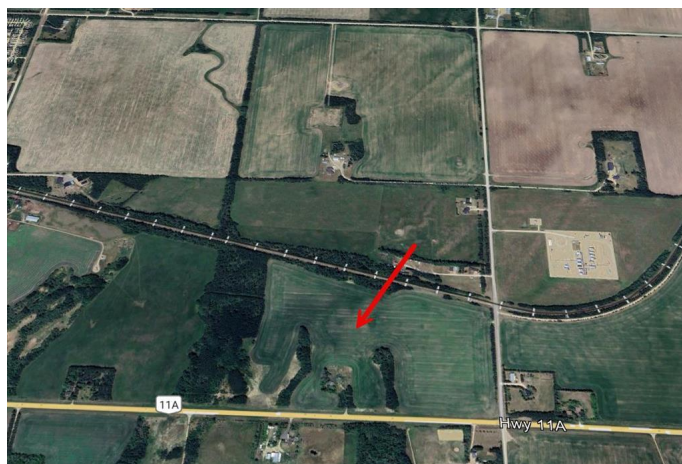
Incredible chance to secure a high-exposure 87.64-acre parcel along Highway 11A, just west of Highway 20. Zoned Future Development (FD) and supported by a professionally prepared Outline Plan by Stantec, this property is ideally positioned within Sylvan Lake's North East Area Structure Plan (NEASP) for future residential and commercial development. Excellent visibility, strong regional access to Hwy 2, and growing infrastructure make this a standout investment for developers and landholders. Rare opportunity in one of Central Alberta's fastest-growing corridors.

Essential Information

MLS® #	A2212958
Price	\$989,900
Bathrooms	0.00
Acres	87.64
Type	Land
Sub-Type	Commercial Land
Status	Active

Community Information

Address	1120 Highway 11a
Subdivision	NONE
City	Sylvan Lake
County	Red Deer County
Province	Alberta



Postal Code T4E 0B5

Additional Information

Date Listed April 17th, 2025

Days on Market 16

Zoning FD

Listing Details

Listing Office eXp Realty

Data is supplied by Pillar 9â„¢ MLS® System. Pillar 9â„¢ is the owner of the copyright in its MLS® System. Data is deemed reliable but is not guaranteed accurate by Pillar 9â„¢. The trademarks MLS®, Multiple Listing Service® and the associated logos are owned by The Canadian Real Estate Association (CREA) and identify the quality of services provided by real estate professionals who are members of CREA. Used under license.