

\$539,900 - 1250 10 Street Sw, Calgary

MLS® #A2211329

\$539,900

2 Bedroom, 2.00 Bathroom, 1,183 sqft

Residential on 0.00 Acres

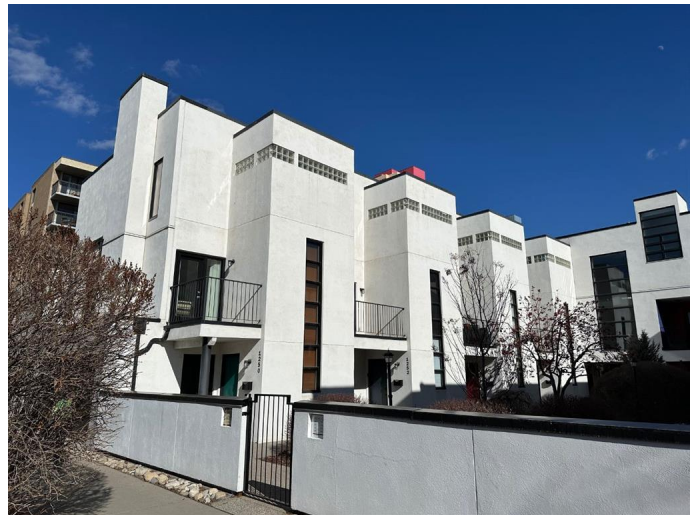
Beltline, Calgary, Alberta

Discover urban elegance in this exceptional contemporary townhouse condo nestled within the prestigious Connaught Gardens, designed by renowned Sturges Architecture and celebrated in the Alberta Association of Architecture Chronicle of Significant Alberta Architecture. This unique complex features 11 thoughtfully designed townhouses, centered around a serene garden courtyard, with picturesque views to the west overlooking the school grounds and bordering the Connaught Community Street Park.

This corner raised unit, located at the back of the complex, offers an abundance of natural light with its south, west, and north exposures, complemented by only one shared wall. Step inside to find high ceilings and beautiful hardwood floors that guide you through the open main floor layout. The spacious living area, adorned with a stylish tiled gas fireplace, flows effortlessly onto a sun-drenched sundeck, while the generous wrap-around terrace off the kitchen provides a perfect private retreat for outdoor entertaining.

The modern kitchen is a culinary delight featuring sleek granite countertops and stainless steel appliances, designed for both functionality and style. A convenient 2-piece bath completes the main floor.

Ascend to the upper level to find two spacious bedrooms, including a primary suite with a



walk-in closet, alongside a large 4-piece bathroom and a designated laundry area. The freshly painted white interior adds a touch of contemporary flair throughout.

Your new home includes access to a double shared garage with one other unit owner, equipped with insulation, a garage door opener, and additional bike storage.

Situated in an iconic complex that is ideally located near shopping, dining, and parks, this townhouse condo truly encapsulates modern living at its finest. This property must be seen to be fully appreciated—don’t miss your chance to call this extraordinary space your home!

Built in 1993

Essential Information

MLS® #	A2211329
Price	\$539,900
Bedrooms	2
Bathrooms	2.00
Full Baths	1
Half Baths	1
Square Footage	1,183
Acres	0.00
Year Built	1993
Type	Residential
Sub-Type	Row/Townhouse
Style	2 Storey
Status	Active

Community Information

Address	1250 10 Street Sw
Subdivision	Beltline
City	Calgary
County	Calgary

Province Alberta
Postal Code T2R 1P8

Amenities

Amenities Secured Parking, Snow Rem
Parking Spaces 1
Parking Assigned, Garage Door Op
Garage Faces Side, Single G
of Garages 1

Interior

Interior Features Granite Counters, High Ceil
Separate Entrance, Stone
Track Lighting
Appliances Dishwasher, Dryer, Electric
Range Hood, Refrigerator, W
Heating Forced Air, Natural Gas
Cooling None
Fireplace Yes
of Fireplaces 1
Fireplaces Gas, Living Room, Tile
of Stories 2
Basement None

Exterior

Exterior Features Balcony
Lot Description Corner Lot
Roof Tar/Gravel, Flat
Construction Stucco, Wood Frame
Foundation Poured Concrete

Additional Information

Date Listed April 11th, 2025
Days on Market 34
Zoning CC-MH

Listing Details

Listing Office RE/MAX Real Estate (Central)



Data is supplied by Pillar 9â„¢ MLSÂ® System. Pillar 9â„¢ is the owner of the copyright in its MLSÂ® System. Data is deemed reliable but is not guaranteed accurate by Pillar 9â„¢. The trademarks MLSÂ®, Multiple Listing ServiceÂ® and

the associated logos are owned by The Canadian Real Estate Association (CREA) and identify the quality of services provided by real estate professionals who are members of CREA. Used under license.