

\$650,000 - Range Road 23, Rural Birch Hills County

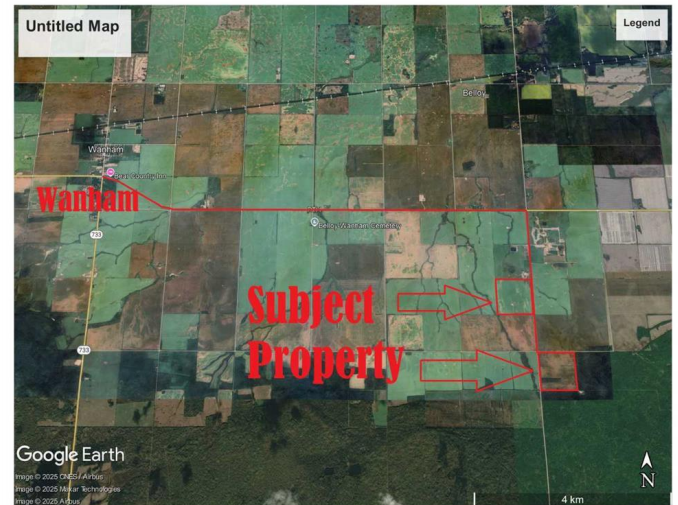
MLS® #A2208985

\$650,000

0 Bedroom, 0.00 Bathroom,
Agri-Business on 158.97 Acres

NONE, Rural Birch Hills County, Alberta

Excellent quarter section of prime farmland.
Aproximately 154 cultivated with the balance
being an abandoned yardsite with older
buildings and a dugout. Class 2 soil. The land
is rented out for the 2025 crop year.



Essential Information

MLS® #	A2208985
Price	\$650,000
Bathrooms	0.00
Acres	158.97
Type	Agri-Business
Sub-Type	Agriculture
Status	Active

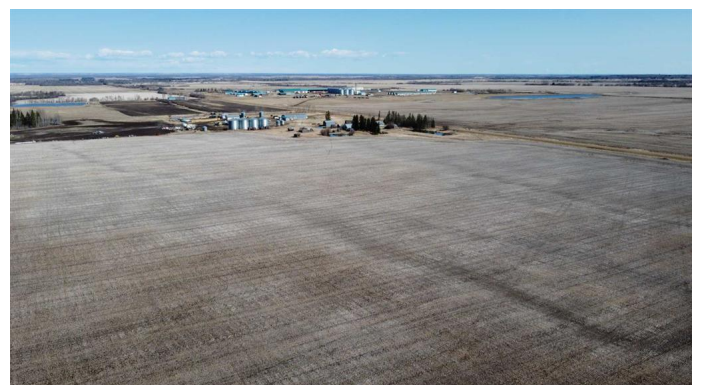
Community Information

Address	Range Road 23
Subdivision	NONE
City	Rural Birch Hills County
County	Birch Hills County
Province	Alberta
Postal Code	T0H 3P0

Additional Information

Date Listed	April 8th, 2025
Days on Market	90
Zoning	AG-1

Listing Details



Data is supplied by Pillar 9â„¢ MLSÂ® System. Pillar 9â„¢ is the owner of the copyright in its MLSÂ® System. Data is deemed reliable but is not guaranteed accurate by Pillar 9â„¢. The trademarks MLSÂ®, Multiple Listing ServiceÂ® and the associated logos are owned by The Canadian Real Estate Association (CREA) and identify the quality of services provided by real estate professionals who are members of CREA. Used under license.