

\$446,000 - 157 Lasalle Terrace W, Lethbridge

MLS® #A2208903

\$446,000

3 Bedroom, 3.00 Bathroom, 1,095 sqft

Residential on 0.10 Acres

Garry Station, Lethbridge, Alberta

Welcome to this stunning modern bi-level home located in Gary Station Community on the west side of Lethbridge. This beautiful home features three bedrooms and three full bathrooms, making it perfect for families or those who love to host. What sets this home apart is its unique layout, featuring two master suites—one on the upper level and a spacious one on the lower level—each with an attached ensuite bathroom.

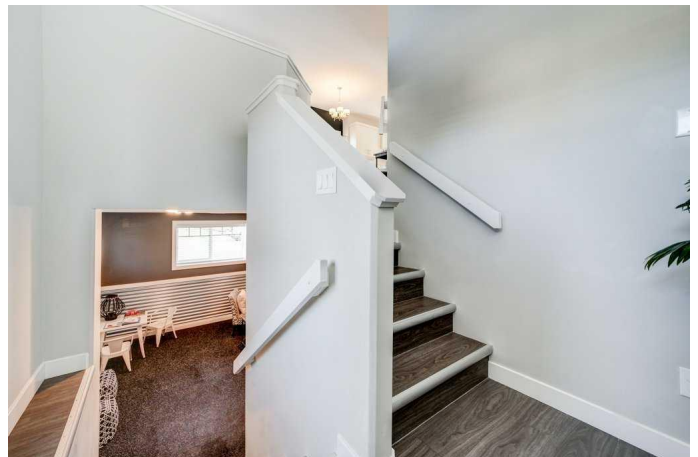
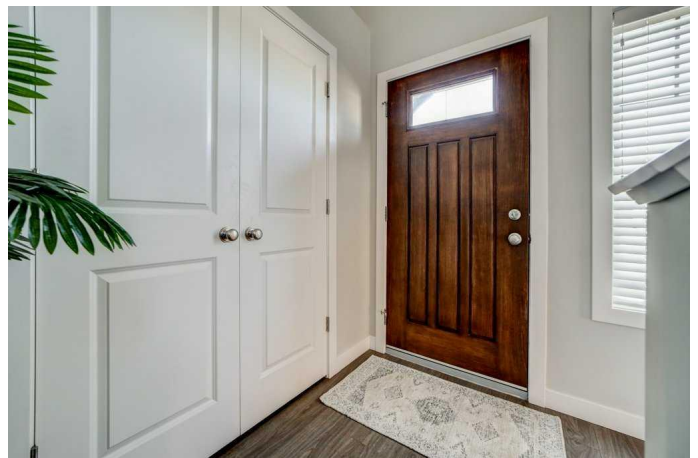
The main floor of this home features a galley style kitchen, including all kitchen appliances and quartz countertops, a dining area and cozy living room with a bright front window looking towards the walking path to the pond (lake). Enjoy the ease of living in a community that offers all amenities within walking distance. From parks and playgrounds to scenic trails, schools, restaurants, and grocery stores, everything you need is just a short stroll away.

Don't miss out on the opportunity to make this home your own. Call your REALTOR® today for a viewing

Built in 2013

Essential Information

MLS® #	A2208903
Price	\$446,000
Bedrooms	3
Bathrooms	3.00



Full Baths	3
Square Footage	1,095
Acres	0.10
Year Built	2013
Type	Residential
Sub-Type	Detached
Style	Bi-Level
Status	Active

Community Information

Address	157 Lasalle Terrace W
Subdivision	Garry Station
City	Lethbridge
County	Lethbridge
Province	Alberta
Postal Code	T1J 5G9

Amenities

Parking Spaces	3
Parking	Off Street

Interior

Interior Features	Open Floorplan, Quartz Counters, Soaking Tub
Appliances	Central Air Conditioner, Dishwasher, Microwave Hood Fan, Refrigerator, Stove(s), Washer/Dryer, Window Coverings
Heating	Forced Air, Natural Gas
Cooling	Central Air
Fireplace	Yes
# of Fireplaces	1
Fireplaces	Basement, Electric
Has Basement	Yes
Basement	Finished, Full

Exterior

Exterior Features	None
Lot Description	Back Lane, Corner Lot
Roof	Asphalt Shingle
Construction	Vinyl Siding, Wood Frame
Foundation	Poured Concrete

Additional Information

Date Listed May 9th, 2025
Zoning R-CL

Listing Details

Listing Office RE/MAX FIRST

Data is supplied by Pillar 9â„¢ MLS® System. Pillar 9â„¢ is the owner of the copyright in its MLS® System. Data is deemed reliable but is not guaranteed accurate by Pillar 9â„¢. The trademarks MLS®, Multiple Listing Service® and the associated logos are owned by The Canadian Real Estate Association (CREA) and identify the quality of services provided by real estate professionals who are members of CREA. Used under license.