

# \$940,000 - 10 Sunset Crescent W, Rural Lethbridge County

---

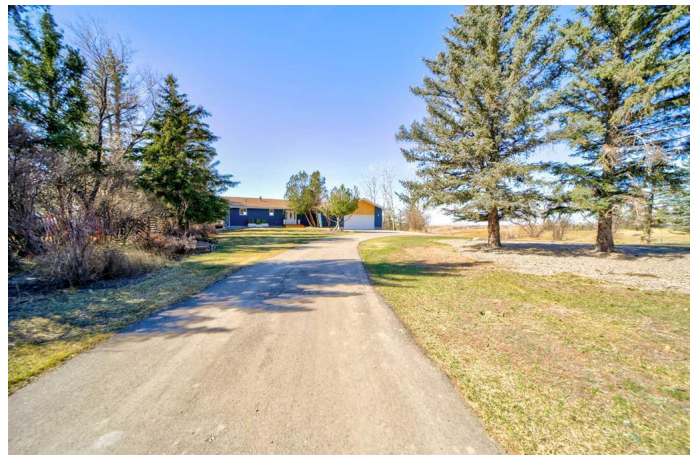
MLS® #A2208889

**\$940,000**

4 Bedroom, 3.00 Bathroom, 1,739 sqft  
Residential on 1.33 Acres

NONE, Rural Lethbridge County, Alberta

Want a stunning acreage with insane views and total privacy just seconds from the city? Here she is! Listed BELOW appraised value. Welcome to 10 Sunset Crescent, a newly outfitted bungalow on an extremely private sprawling 1.33 acre lot, only 2 minutes from the city on pavement, with only 1 direct neighbor and a park next door! This property backs onto the coulee with its south facing back yard, and a park directly beside you. Enjoy the vast views from your HUGE, partially covered, brand new deck. Enter the property off the circular driveway which can easily accommodate 6 cars as you pull up to the double front attached garage. Enter into this fully updated bungalow and be prepared for sheer luxury at every turn. This house has a new deck, new eaves, new fascia, new exterior paint, new interior paint, new windows through out, new floors, new doors, new cabinetry in the brand new state of the art chefs dream kitchen, all three bathrooms and the wet bar in the basement. Brand new appliances throughout as well! New Quartz counter tops, statement light fixtures, stunning sinks and taps, window coverings, backsplash, mirrors and 3 fireplaces. The details go all the way to the hinges on the doors and the marble on the walls. This house is an exceptional statement piece. The master retreat with walk in closet and luxury romance style ensuite, second bedroom, and second bathroom



coupled with the open concept main living space (that is just amazing for entertaining) complete the main floor. Downstairs you have another fully updated 5 piece bathroom, 2 more bedrooms, a wet bar and sunken living space- perfect for watching the game, or letting the kids play! This basement is a walkout with french doors leading to a large sunken concrete patio, a perfect spot for a hot tub. This property is waiting for you, so you can start living the luxury acreage lifestyle you deserve, just 2 minutes from the Y, in the beautiful Sunset Acres.

Built in 1978

### Essential Information

MLS® #	A2208889
Price	\$940,000
Bedrooms	4
Bathrooms	3.00
Full Baths	2
Half Baths	1
Square Footage	1,739
Acres	1.33
Year Built	1978
Type	Residential
Sub-Type	Detached
Style	Acreage with Residence, Bungalow
Status	Active

### Community Information

Address	10 Sunset Crescent W
Subdivision	NONE
City	Rural Lethbridge County
County	Lethbridge County
Province	Alberta
Postal Code	T1J 5S1

### Amenities

Parking Spaces	6
Parking	Double Garage Attached
# of Garages	2

## Interior

Interior Features	Double Vanity, Kitchen Island, No Animal Home, No Smoking Home, Open Floorplan, Sump Pump(s), Vinyl Windows, Closet Organizers, Granite Counters, Tankless Hot Water, Wet Bar
Appliances	Dishwasher, Garage Control(s), Microwave, Refrigerator, Washer/Dryer, Window Coverings, Built-In Oven, Electric Cooktop, Tankless Water Heater
Heating	Fireplace(s), Forced Air
Cooling	None
Fireplace	Yes
# of Fireplaces	3
Fireplaces	Electric, Wood Burning
Has Basement	Yes
Basement	Finished, Full, Walk-Up To Grade

## Exterior

Exterior Features	Private Yard
Lot Description	Back Yard, Cul-De-Sac, Front Yard, Level, Views, Backs on to Park/Green Space
Roof	Asphalt Shingle
Construction	Wood Frame, Brick
Foundation	Poured Concrete

## Additional Information

Date Listed	April 11th, 2025
Days on Market	130
Zoning	GCR

## Listing Details

Listing Office	Onyx Realty Ltd.
----------------	------------------

Data is supplied by Pillar 9â„¢ MLS® System. Pillar 9â„¢ is the owner of the copyright in its MLS® System. Data is deemed reliable but is not guaranteed accurate by Pillar 9â„¢. The trademarks MLS®, Multiple Listing Service® and the associated logos are owned by The Canadian Real Estate Association (CREA) and identify the quality of services provided by real estate professionals who are members of CREA. Used under license.